

Hello/Bonjour.

Congratulations on purchasing your new Ergotec ET-100.
Nous vous félicitons d'avoir fait l'acquisition d'Ergotec ET-100.

At Ergotec, we understand every body is different and have carefully designed our massage chair with that in mind. But enough about us, this is about you. Learning how to use your new chair is simple (we designed it that way).

Chez Ergotec, nous savons que chaque corps est unique et en avons tenu compte pour concevoir notre fauteuil de massage. Mais assez à propos de nous, nous sommes là pour vous. Apprendre à utiliser votre nouveau fauteuil est très simple (on l'a conçu ainsi!)

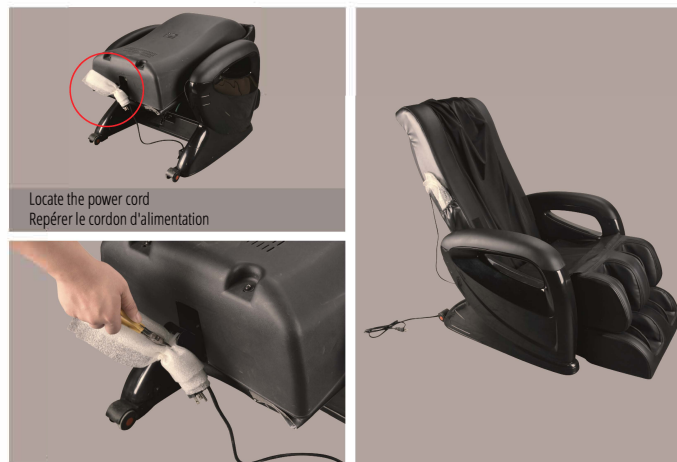
So let's get started.
Alors commençons.

Assembly Instructions / Instructions de montage

- 1 Open the box and take the chair out. Collect all the accessories and put them outside.
Ouvrez la boîte et retirez le fauteuil de sa boîte. Ensuite ramassez tous les accessoires et placez-les de côté.



- 2 Get rid off the cable tie to release the power cord. Then unfold the backrest.
Retirer l'attache du câble pour libérer le cordon d'alimentation. Ensuite, déplier le dossier.



Locate the power cord
Repérer le cordon d'alimentation

- 3 Attach the backrest pad.** Zip the zipper on the top of the backrest. Make sure Velcros aligned together.
Connect the heater wire. Then attach the pillow.
Fixez le coussin-dossier au dossier. Fermez la fermeture éclair sur le dessus du dossier. S'assurer que les velcros sont bien alignés. Brancher le fil de chauffage puis attacher l'oreiller.



- 4 Attach the seat pad.** Connect the air hose. Make sure Velcros aligned together.
Attacher le coussin du fauteuil. Connecter le tuyau d'air. S'assurer que les velcros sont bien alignés.



- 5 Get rid of packing material of the remote.** Connect the chair to a power supply. Turn on the power switch. Now your massage chair is ready to go!
Disposer des emballages de la télécommande. Connectez le fauteuil par l'alimentation électrique et mettez l'interrupteur en marche. Le fauteuil sera maintenant prêt à utiliser.





ET-100 MASSAGECHAIR[®]

INSTRUCTION MANUAL AND WARRANTY INFORMATION

ONE YEAR LIMITED WARRANTY

IMPORTANT SAFETY INSTRUCTIONS

WHEN USING ELECTRICAL PRODUCTS, BASIC SAFETY PRECAUTIONS SHOULD ALWAYS BE FOLLOWED, INCLUDING THE FOLLOWING:

READ ALL INSTRUCTIONS BEFORE USING.

DANGER – TO REDUCE THE RISK OF ELECTRIC SHOCK:

- Always unplug this appliance from the electrical outlet immediately after using and before cleaning.
- Never use pins or other metallic fasteners with this appliance.

WARNING – TO REDUCE THE RISK OF BURNS, FIRE, ELECTRIC SHOCK, OR INJURY TO PERSONS:

- An appliance should NEVER be left unattended when plugged in. Unplug from outlet when not in use, and before putting on or taking off parts or attachments.
- NOT for use by children.
- Close supervision is necessary when this appliance is used by, on, or near children, invalids, or disabled persons.
- Use this appliance only for its intended use as described in this manual. DO NOT use attachments not recommended by Cozzia; specifically, any attachments not provided with the unit.
- NEVER operate this appliance if it has a damaged cord or plug, if it is not working properly, if it has been dropped or damaged, or dropped into water. Contact Cozzia Service Center for examination and repair.
- Use heated surfaces carefully. May cause serious burns. DO NOT use on sensitive skin areas or in the presence of poor circulation. The unattended use of heat by children or incapacitated persons may be dangerous.
- Keep the cord away from heated surfaces.
- NEVER drop or insert any object into any opening.
- DO NOT use this massager in close proximity to loose clothing, jewelry.
- DO NOT operate where aerosol (spray) products are being used or where oxygen is being administered.
- DO NOT operate under a blanket or pillow. Excessive heating can occur and cause fire, electric shock, or injury to persons.
- DO NOT carry this appliance by supply cord or use cord as a handle.
- To disconnect, turn all controls to the “off” position, then remove plug from outlet.
- DO NOT use outdoors.
- NEVER operate the appliance with the air openings blocked. Keep the air openings free of lint, hair and the like.

SAVE THESE INSTRUCTIONS

CAUTION – PLEASE READ ALL INSTRUCTIONS CAREFULLY BEFORE OPERATING.

- This product is not intended for medical use. It is intended only to provide a luxurious massage.
- Consult your doctor prior to using this product, if
 - You are pregnant
 - You have a pacemaker
 - You have any concerns regarding your health
- NOT recommended for use by diabetics.
- NEVER leave the appliance unattended, especially if children are present.
- DO NOT use this product for more than 30 minutes at a time.
- Extensive use could lead to the product's excessive heating and shorter life. Should this occur, discontinue use and allow the unit to cool before operating.
- NEVER use this product directly on swollen or inflamed areas or skin eruptions.
- DO NOT use this product as a substitute for medical attention.
- This product should NEVER be used by any individual suffering from any physical ailment that would limit the user's capacity to operate the controls or who has sensory deficiencies in the lower half of their body.
- This appliance is intended for household use only.

MAINTENANCE

TO STORE

Place massage chair in its box or in a safe, dry, cool place. Avoid contact with sharp edges or pointed objects which might cut or puncture the fabric surface. To avoid breakage, do not wrap the power cord around the unit. Do not hang the unit by the hand control cord.

TO CLEAN

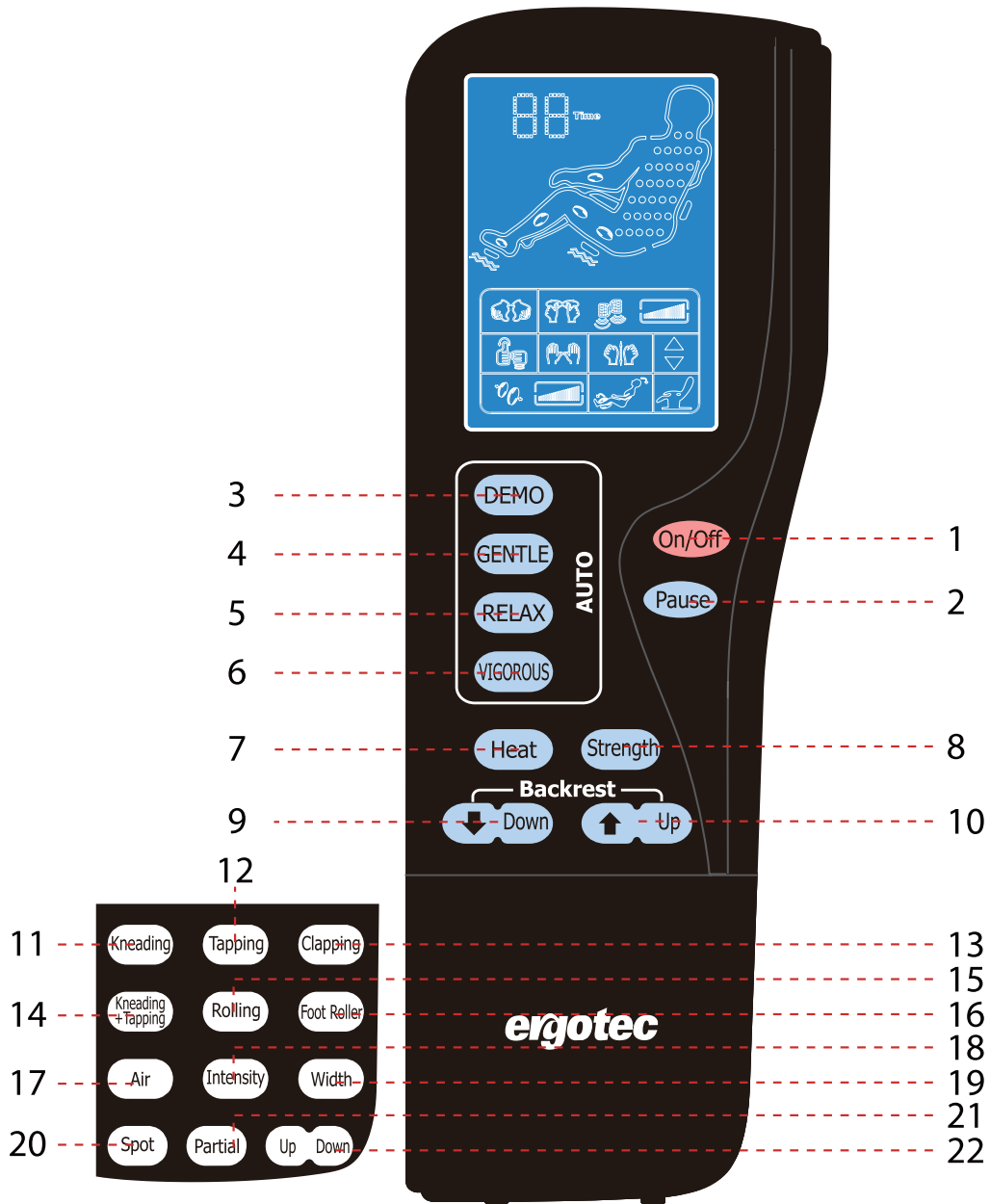
Unplug the unit and allow it to cool before cleaning. Clean only with a soft, slightly damp sponge. Never allow water or any other liquids to come into contact with the unit.

- DO NOT immerse in any liquid to clean.
- NEVER use abrasive cleaners, brushes, gasoline, kerosene, glass / furniture polish or paint thinner to clean.
- DO NOT attempt to repair the ET-100 without guidance from the Cozzia service department. For service, call the consumer relations telephone number listed in the warranty section.

HOW TO USE

Connect the chair to a power supply, then turn switch to the “I” position. The chair is now in idle mode. During idle, the on/off button will blink.

During idle, only the on/off, pause, legrest recline/restore, and chair recline/restore buttons can be operated.



1. ON/OFF On/Off

The Start/Stop Control Button

Press this button to light up the LCD screen. Press any massage function button to start massage. This will initiate the timer function. Press this button again to stop all massage functions, massage chair will return to its original position.

2. PAUSE Pause

Press this button once to halt current massage function and countdown timer. During the pause mode, the pause button will be blinking.

Press this button again to cease the “Pause” function and resume previous massage functions, as well as countdown timer.

3. DEMO DEMO

This massage will quickly demonstrate all of the massage features in 5 minutes.

4. GENTLE GENTLE

A program designed to provide a quiet, gentle massage that is good for beginners or those that prefer a soft touch.

5. RELAX RELAX

A program designed to provide a mild massage that is great for deep relaxation, best used before going to sleep.

6. VIGOROUS VIGOROUS

This massage will combine vigorous tapping on your back and an air massage focused on your legs.

7. HEAT Heat

Lumbar Heat Function Start/Stop Control Button

Press this button to activate lumbar heat function, press this button again to stop the heat function.

Note: During Auto Program mode, pressing this button can also disable/enable the heat function.

8. STRENGTH Strength

The Strength Adjustment Button for Kneading Function

When Kneading function is engage, every single press on this button will change the massage strength interval in the sequence of “Lv1 > Lv2 > Lv3”.

9/10. CHAIR RECLINE AND RESTORE



Keep pressing to comfortably lay flat or to restore the chair to its original position.

11. KNEADING (Kneading)

Kneading Function Start/Stop Control Button

Press this button to activate rhythmic Kneading function for a full back massage at medium strength. Press the button again to stop Kneading function.

12. TAPPING (Tapping)

Tapping Function Start/Stop Control Button

Press this button to activate rhythmic Tapping function for a full back massage at medium speed. Press the button again to stop Tapping function.

13. CLAPPING (Clapping)

Clapping Function Start/Stop Control Button

Press this button to activate rhythmic Clapping function for a full back massage at medium speed. Press the button again to stop Clapping function.

14. KNEADING-TAPPING (Kneading + Tapping)

Kneading-Tapping function Start/Stop Control Button

Press this button to activate rhythmic Kneading-Tapping function for a full back massage at medium speed. Press the button again to stop Kneading-Tapping function.

15. ROLLING (Rolling)

Rolling function Start/Stop Control Button - 3 levels of width to be adjusted

Press this button to activate Rolling function for a full back massage. Press this button again to stop the Rolling function.

Note: This function cannot perform "Spot" massage.

16. FOOT ROLLER (Foot Roller)

Foot Roller Function Start/Stop Control Button

Press this button once to activate rhythmic rolling massage at soles, press this button again to stop rolling massage at soles.

Note: During Auto Program mode, pressing this button can also disable/enable the foot rolling function.

17. AIR

Press this button to activate seat and legrest air pressure massage. Every time this button is pressed, partial air massage function will change in the sequence of SEAT > CALF&FOOT > STOP.

18. INTENSITY

The intensity adjustment button for air pressure massage has 3 levels of intensity.

When the air massage function is engaged, every single press on this button will change the air intensity in the sequence of "Lv1 > Lv2 > Lv3".

19. WIDTH

The Width Adjustment Button

Every single press on this button will change the massage width interval in the sequence of "Narrow > Medium > Wide".

20/21. SPOT/PARTIAL

The Spot or Partial Back Massage

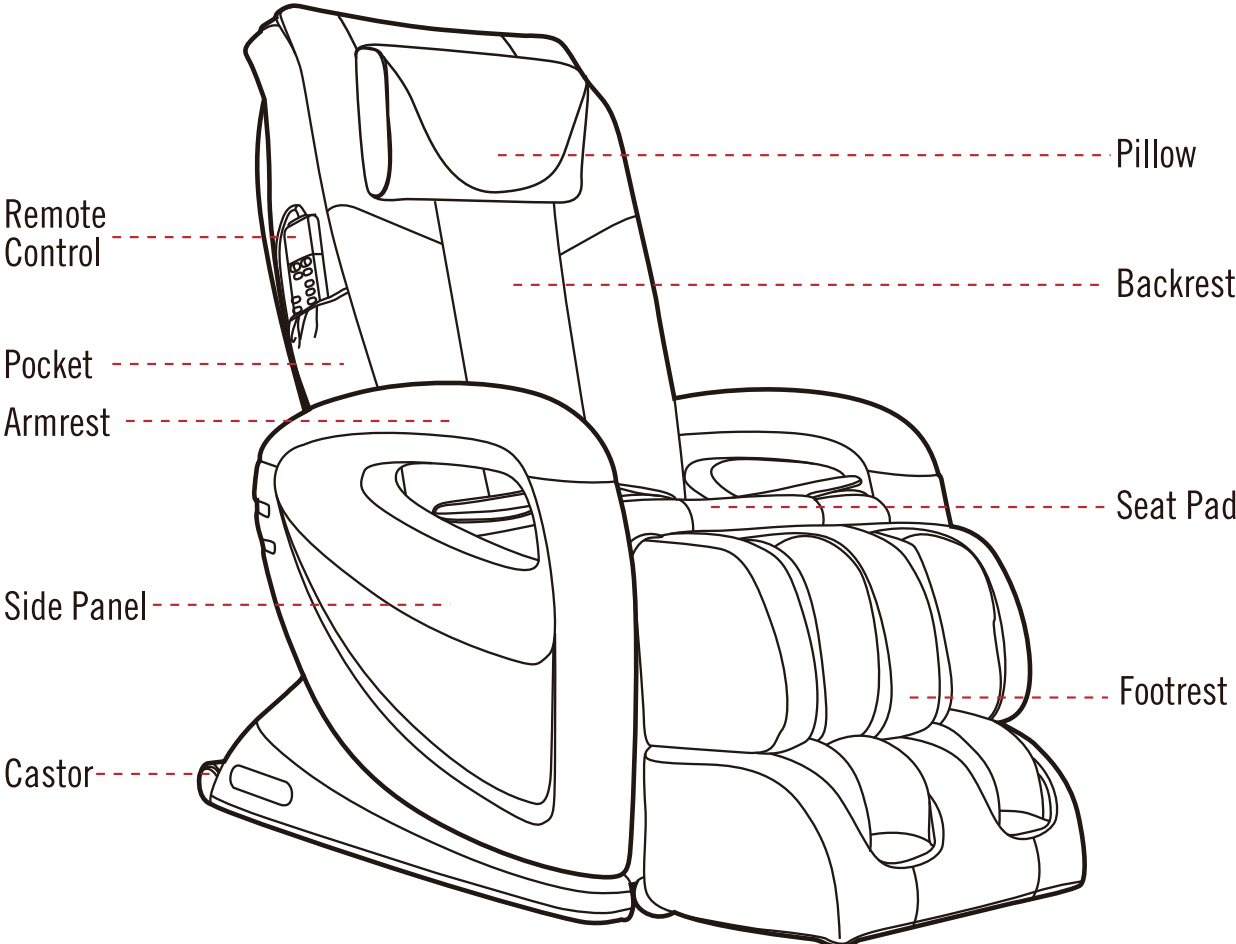
Press this button once to activate localized Spot Massage while the original massage mode continues to run at the latest position. Every single press on this button will change the massage function in the sequence of "SPOT > PARTIAL > STOP".

Note: Partial Massage will use the latest Spot position as the center, and will travel approximately 8cm up or down. SPOT/PARTIAL button is only effective under manual massage mode.

22. UPWARD/DOWNWARD ADJUSTMENT

When the spot and partial massage function are activated, this button can be used to move the massage rollers. Hold this button to move the massage rollers upward/downward respectively. Release the buttons when you've reached the desired position.

FEATURES



ONE YEAR LIMITED WARRANTY

Cozzia USA, LLC sells Ergotec Massage Chair Model No. ET-100 (the "Ergotec Massage Chairs") with the intent that they are free of defects in manufacture and workmanship for a period of one year from the date of original purchase, except as noted below. Cozzia USA, LLC warrants that the Ergotec Massage Chairs will be free of defects in material and workmanship under normal use and service. This warranty extends only to consumers and does not extend to retailers.

Ergotec Massage Chairs have the following warranty:

The Ergotec Massage Chair ET-100 has a one year labor and parts warranty. Cozzia's customer service will not issue Return Material Authorizations (RMAs) for products. Ergotec Massage Chairs will be either repaired by the consumer or by an in-home technician. Cozzia will not issue Return Material Authorizations (RMAs) for buyer's remorse.

Service And Technical Support

Consumers may contact customer service department at 1-888-270-8538 between 8:00 am and 4:00 pm MST, Monday through Friday.

Consumers are required to provide the unit serial number and dated proof of purchase (sales receipt) when they contact the Cozzia service department regarding a repair.

A Cozzia customer service representative will attend to most consumer inquiries, but in some cases a technical service specialist will provide advanced support.

Non-warranty repair is provided on a "per incident" basis. Cozzia customer service will verify that the unit has failed and provide instructions for repairing a unit. All applicable repairs, parts, shipping, handling, local tax and a "per incident" fee will be charged for non-warranty repairs and support calls.

Proof of purchase (original receipt) is required for all warranty repairs or service.

FOR SUPPORT IN THE CANADA:

Monday-Friday 8:00am-4:00pm MST

1.888.270.8538