



cozzia®

USER MANUAL | CZ-730/Qi

Hello.

Congratulations on purchasing your new Cozzia Qi.

COZZIA Qi uses an exclusive Chair Doctor technology with sensors to measure the tension in your body and prescribes a specialized massage based on the results. We also offer a choice of thirteen pre-programmed massage and a calendar that keeps a record of your tension score results.

With the download of the COZZIA Qi app you will have access to the vast number of unique massage features in a massage chair:

Chair Doctor technology measures the tension from your body and prescribes the perfect de-stress Vario Motion Massage treatment/programs

At Cozzia, we understand every body is different and have carefully designed our massage chair with that in mind. But enough about us, this is about you. Learning how to use your new chair is simple (we designed it that way).

So let's get started.

TABLE OF CONTENTS



INTRO

Dimensions 3

Contents 4

Installation 5

Set Up 6



CHAIR

Controls 7-8

Components 9

Massage Points 10

Specification 11



APP

Interface 12-14

Massage Techniques 15

Massage Programs 16-32

Pre-Program Description 33-37

Safety 38-39



CARE

Grounding Instruction 40

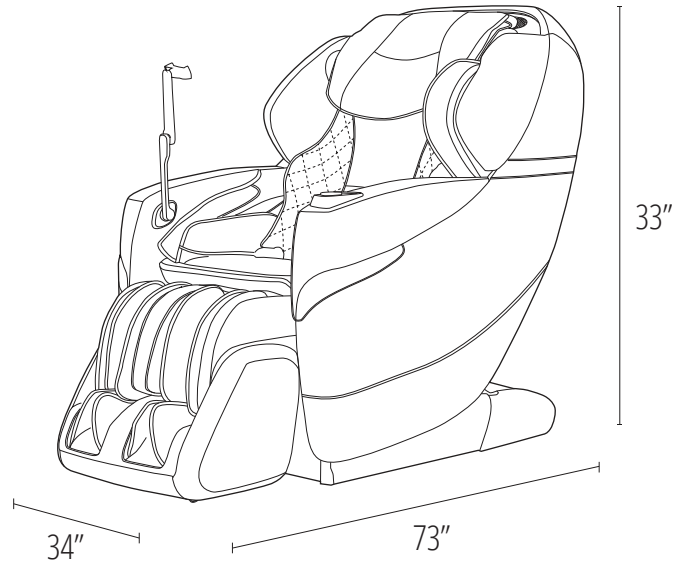
Trouble shooting 40

Care and Storage 41

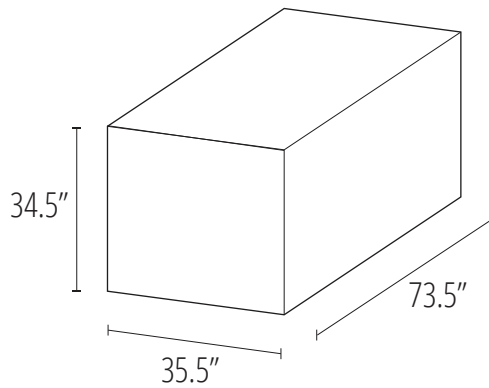
Warranty 42

DIMENSIONS

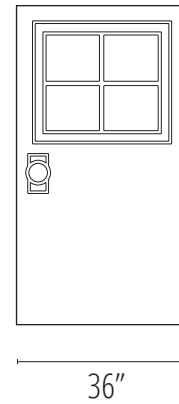
First, let's get your chair inside.



Make sure your door is wider than 36" for chair to passthrough without dismantel



Box dimension



Ensure the Door width is 36" wide

CONTENTS

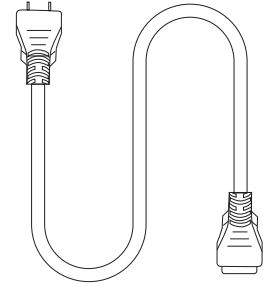
Everything you need for a relaxing experience.



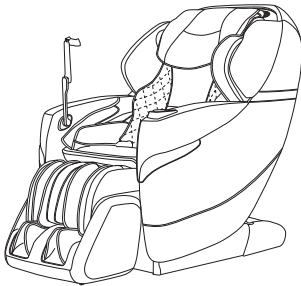
Installation manual



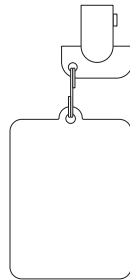
warranty postcard



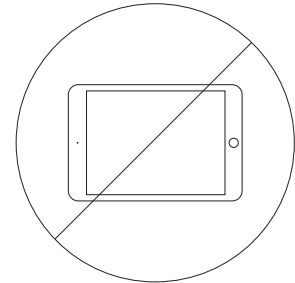
power cord



CZ-730 MASSAGE CHAIR
with tablet stand



key



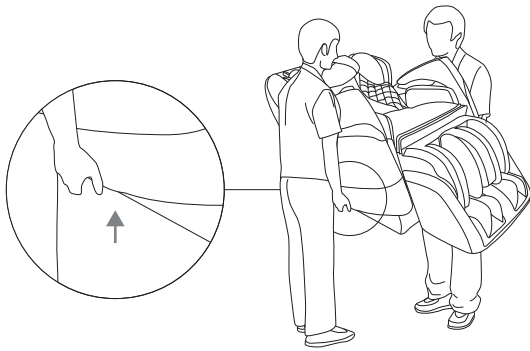
*iPad not included

you need to provide your own iPad operating system must be ios 7 or above
fully compatible with ipad 4th gen, ipad mini 2nd gen, ipad air

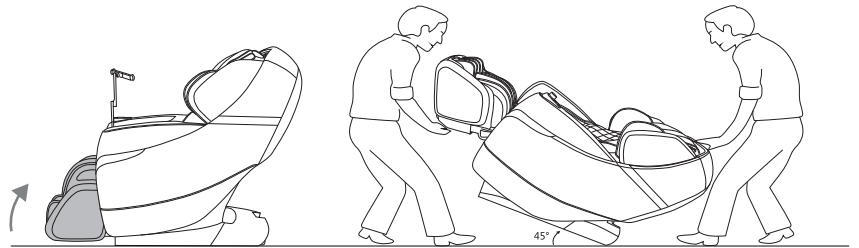
INSTALLATION

A few simple steps to find the best place for your new chair.

HOW TO MOVE

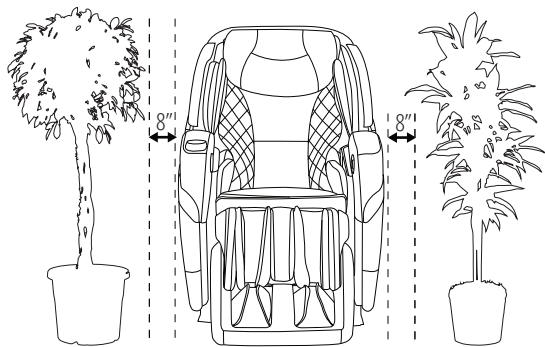


lift and hold the bottom of the chair

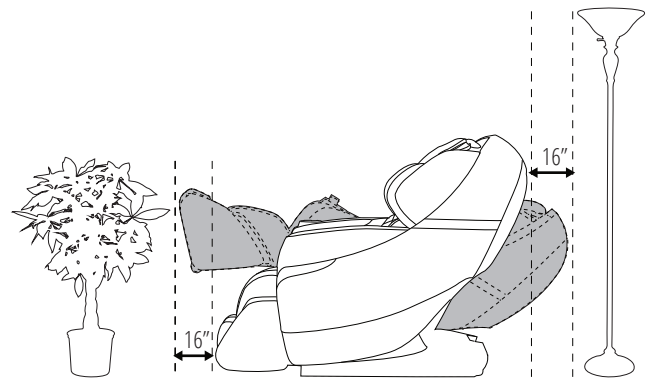


one person lift footrest 45 Degrees onto wheels
and other person press down on backrest

CLEARANCE



Reserve space on left and right

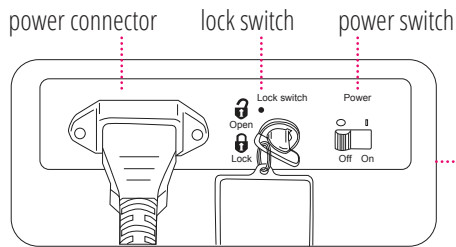
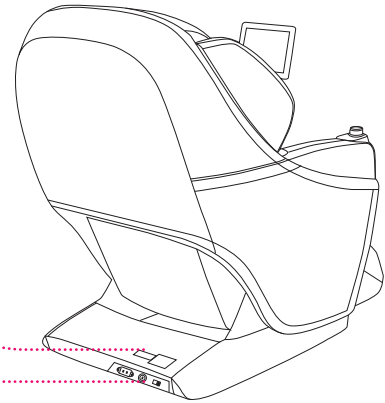
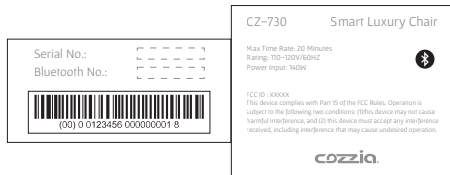


Reserve space on the front and back

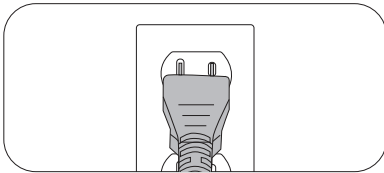
CHAIR SET UP

Starting your first massage is simple. First, let's ensure you follow these steps.

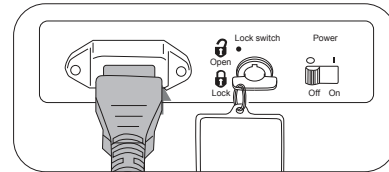
serial No. / bluetooth No.



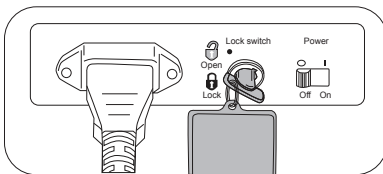
1. Connect the plug into outlet. make sure current is 110v



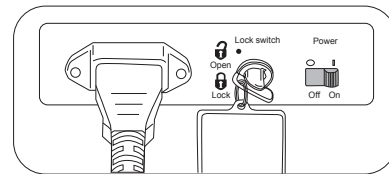
2. Connect the plug into power connector.



3. Turn safety key to "open" position

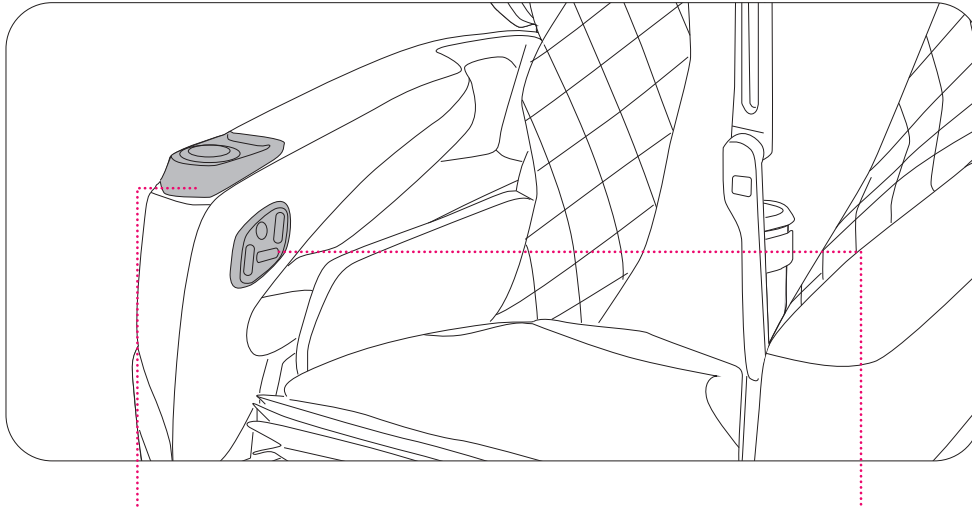


4. Turn on the power switch



CHAIR CONTROLS

Have a seat to learn about your chair's controls.

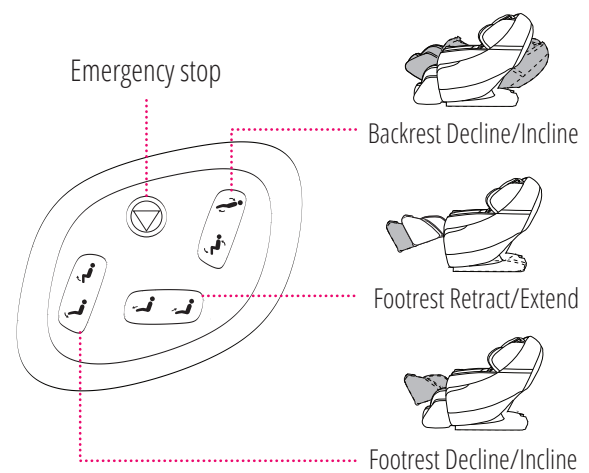
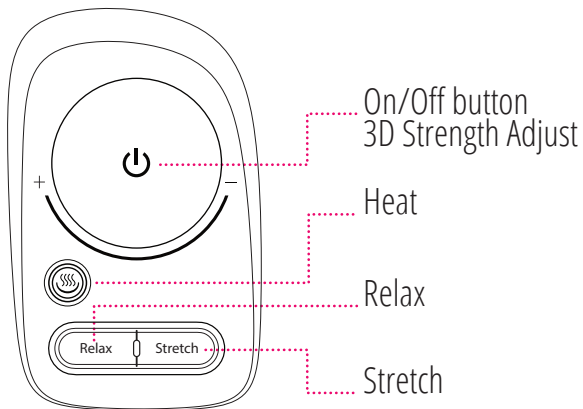


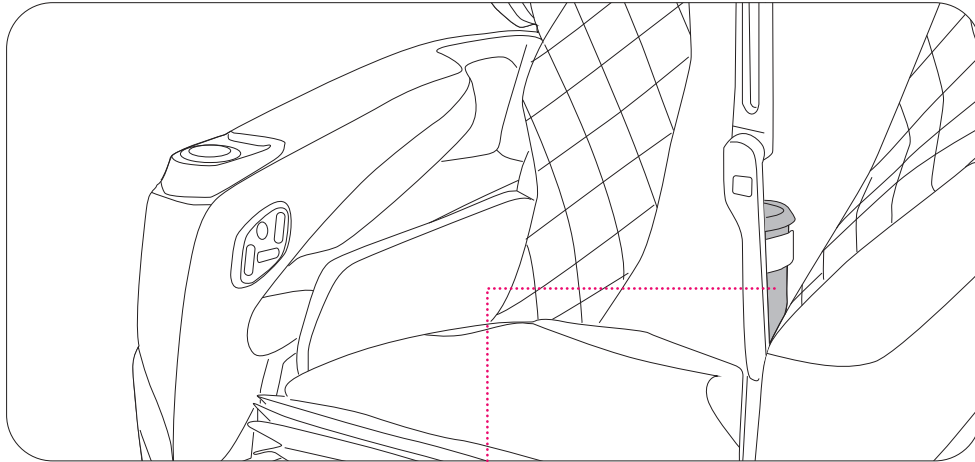
On Off 3D Control Button

Sit in the chair and look to your right.
This will turn your chair on and allows you to control simple functions.

Back And Footrest Control

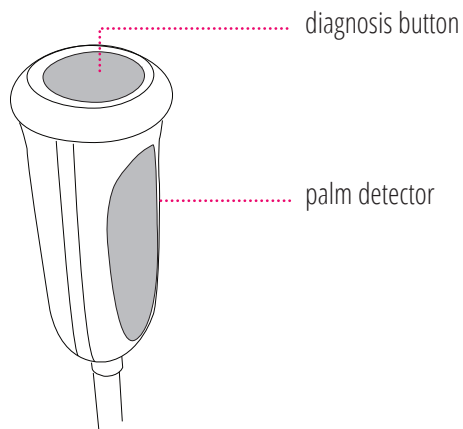
On the inside, right section of your chair you will find your recline options.





Body Pain Detector

On your left, you will find the chair's body pain detector.
Use this with our special app, Chair Doctor. Go to page () for more details.



CHAIR COMPONENTS

Some of your chair's most important features.

Speaker

Therapy Lights

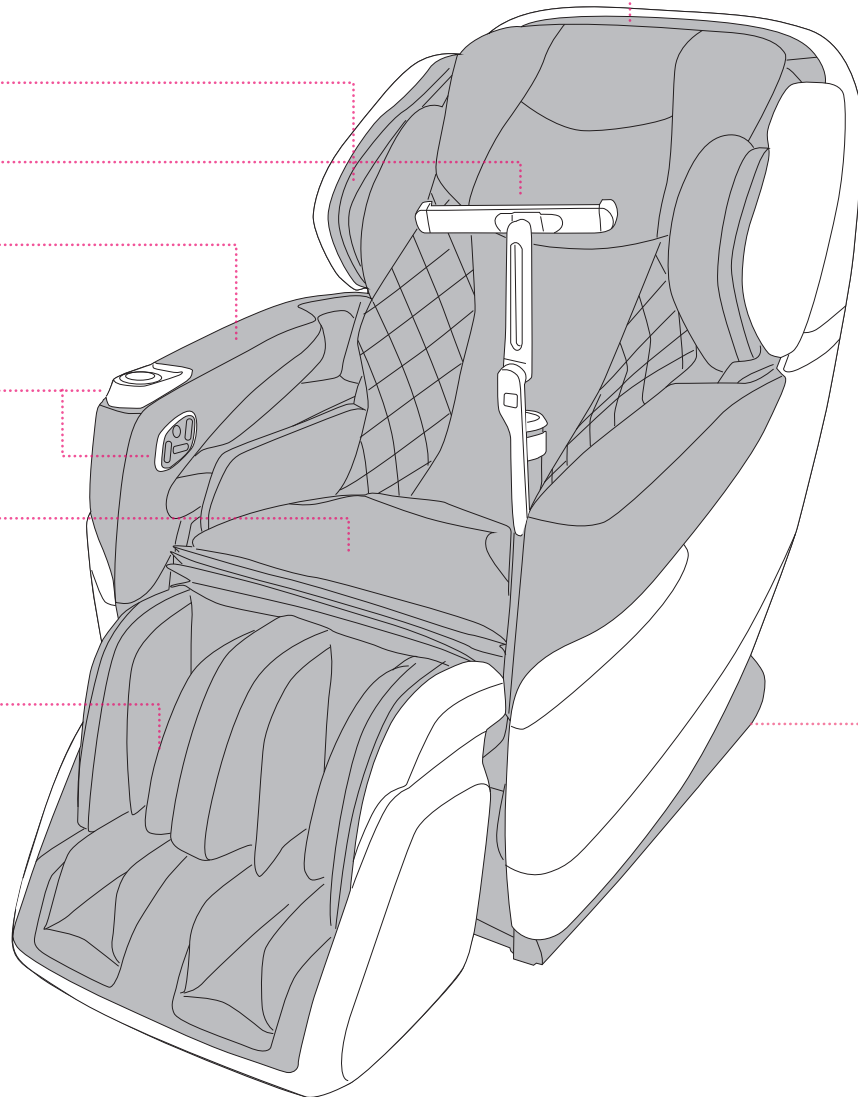
Tablet Holder

Armrest

Controls

Seat

Foot Rest

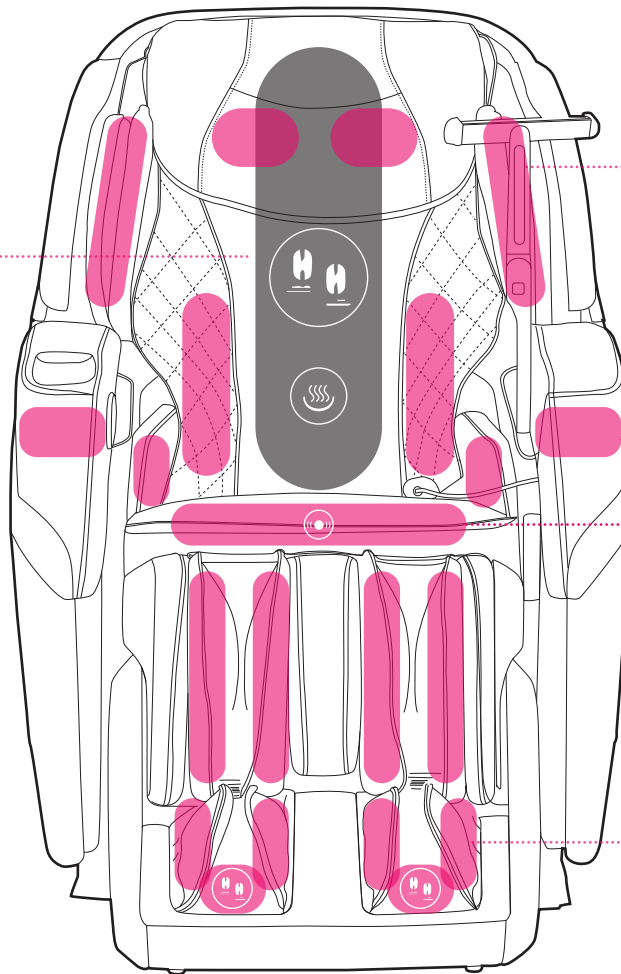


wheels

MASSAGE POINTS

The element that makes your Cozzia massage chair so much more than a place to sit.

VARIO MOTION™
worlds most human like
mechanism



Shoulder

Hand

Seat

Feet



Air bag



VARIO MOTION™
(4D ROBOTIC MECHANISM)



Heater



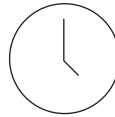
Vibration

CHAIR SPECIFICATIONS

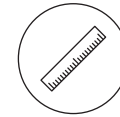
A few important facts about your massage chair.



Model No.
CZ-730/Qi



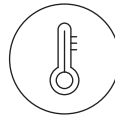
Max. Time rate
20 minutes



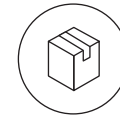
Dimensions (L x W x H)
Chair Dimension: 73.5"x35.3"x34.3"
Reclined Dimension: 77.2"x33.9"x32.7"



Weight Capacity
Gross weight: 315lbs
Net Weight: 260lbs



Usage condition
Environment temperature: 10°C-40°C
Contrasting humidity: 30-85RH



Storage condition
Storage temperature: 20°C-60°C
Storage humidity level: 30-85RH



Power Consumption
140W



Rated Voltage
110 - 120V



Rated Frequency
60Hz



Power of speakers
14W (2 sides)



Length of wiring
Controller wiring 59.1"
Power supply wiring 70.9"

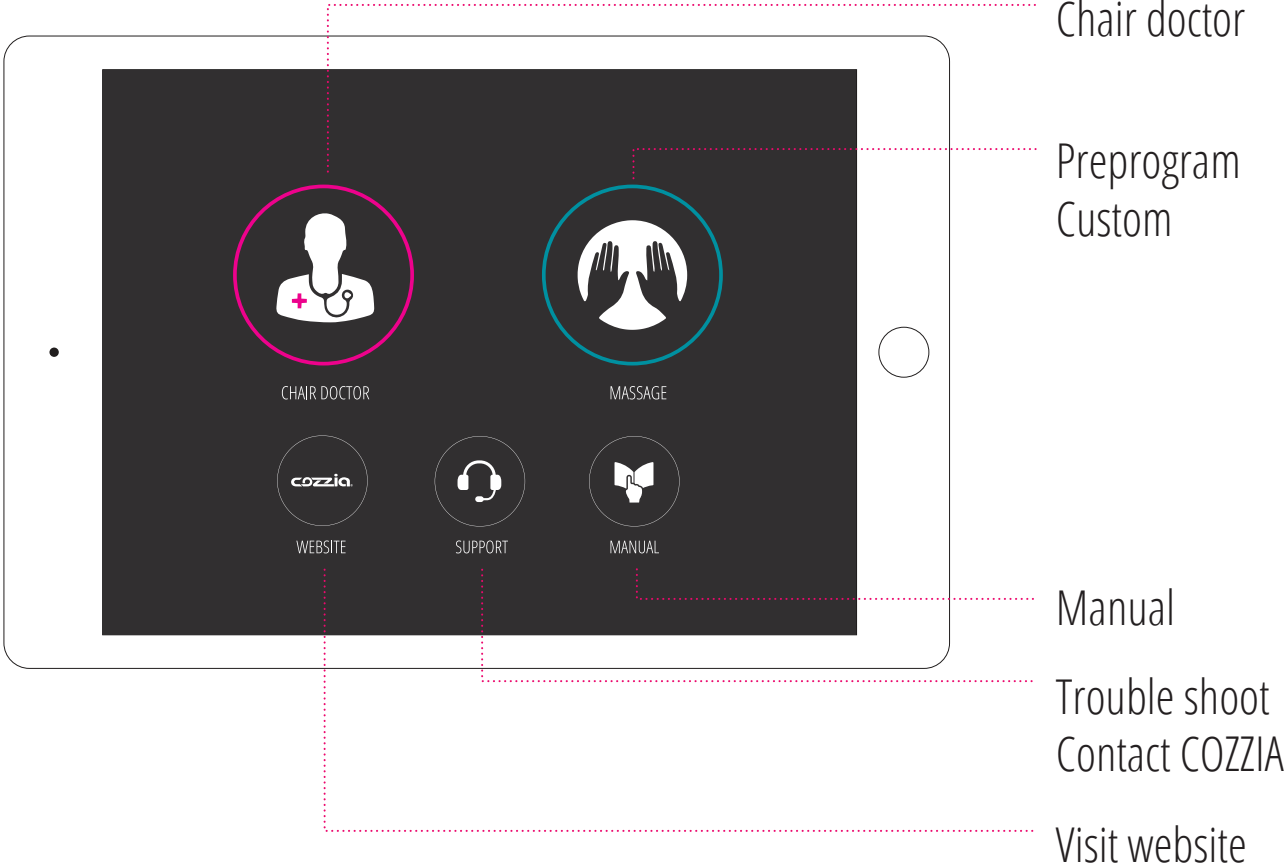


Safety feature
Equipped with overheating and power surge detectors safety feature

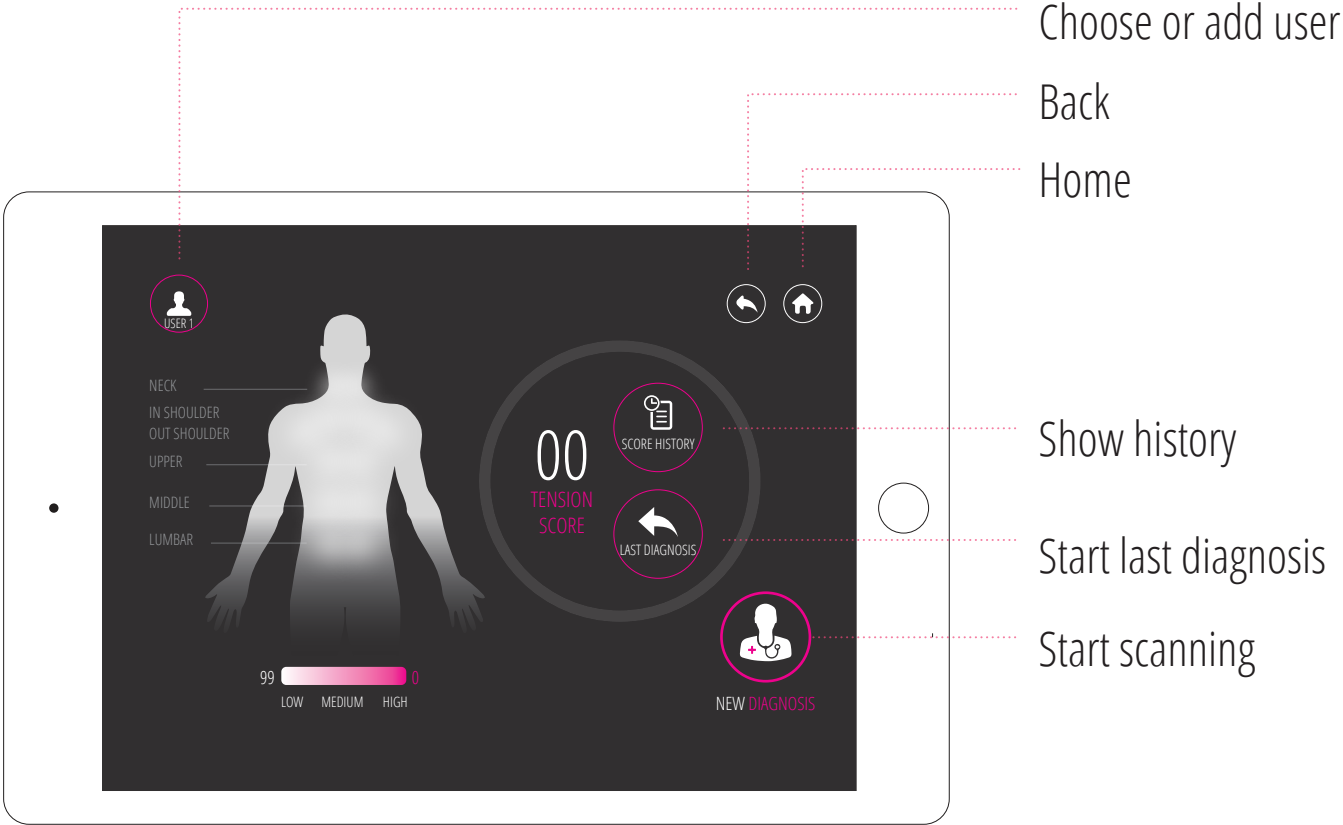
APPLICATION INTERFACE

An interactive app that will make using your massage chair even simpler.

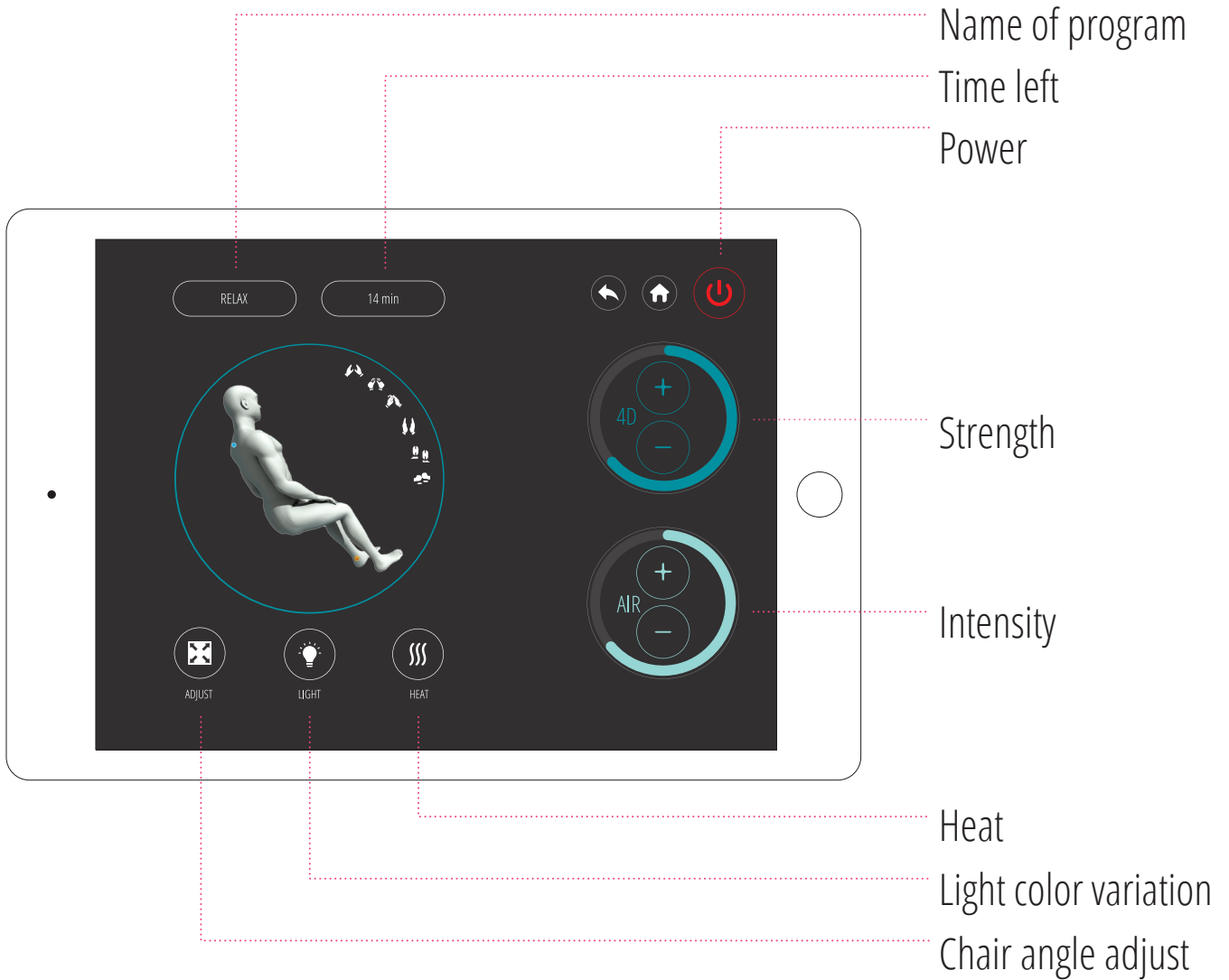
HOME SCREEN



CHAIR DOCTOR SCREEN



MASSAGE CONTROL



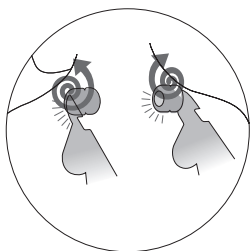
MASSAGE TECHNIQUES

We offer specific massage styles to meet your needs



ULTRA KNEAD

Kneading action at small points.



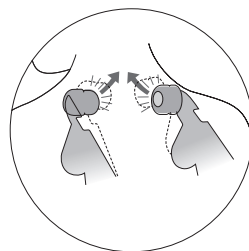
SHIATSU

Compresses muscle knots vertically



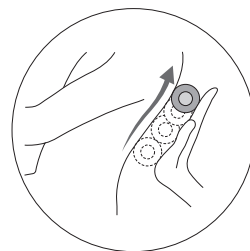
KNEAD

Deep kneading action.



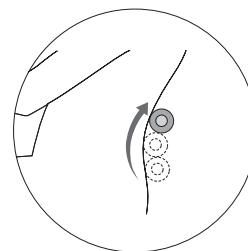
SWEDISH

Rubs gently across a wide area



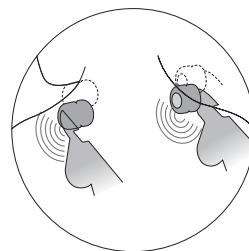
ROLL

Stretches and massages



TAP

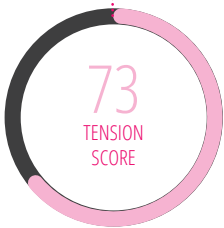
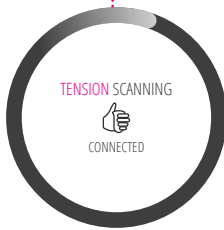
Alternates tapping between right and left



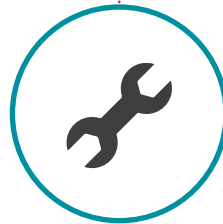
APP MASSAGE PROGRAMS



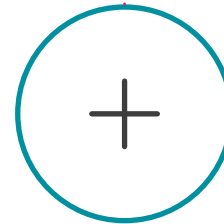
CHAIR DOCTOR



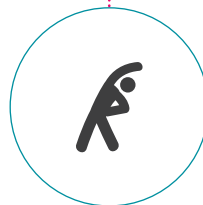
MASSAGE



CUSTOM



MORE PROGRAMS



STRETCH

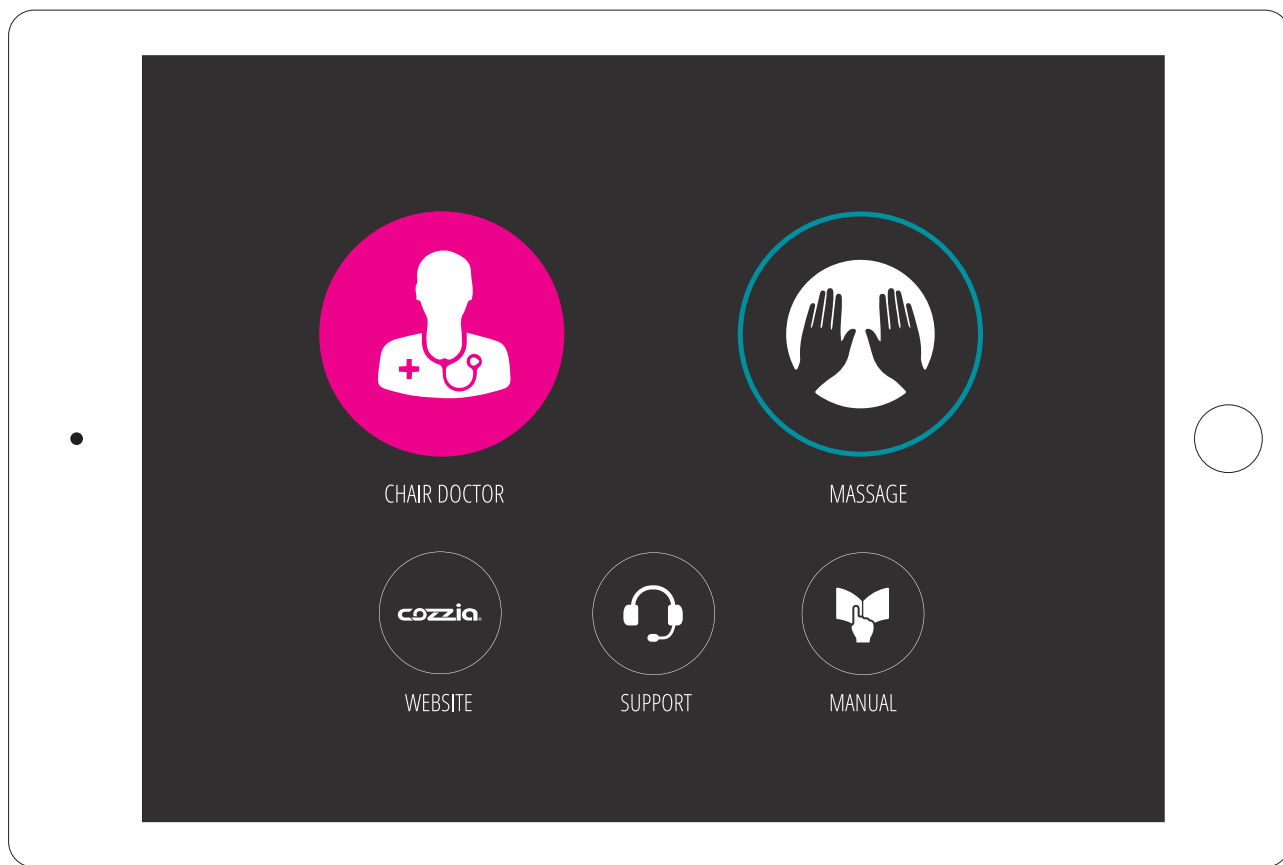


MASSAGE

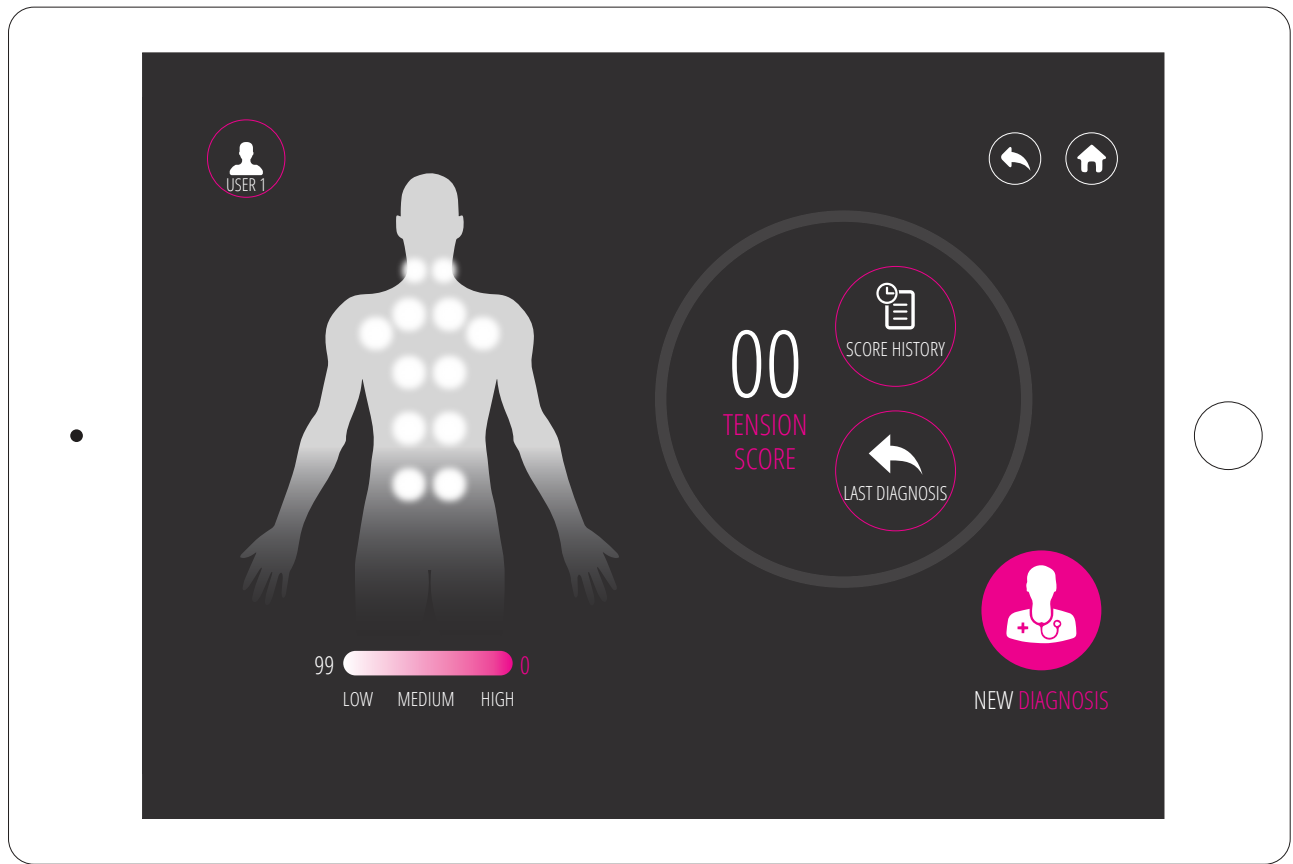
CHAIR DOCTOR

An innovative tool to help diagnosis and treat your pain.

Follow these simple instructions to begin a new diagnosis.

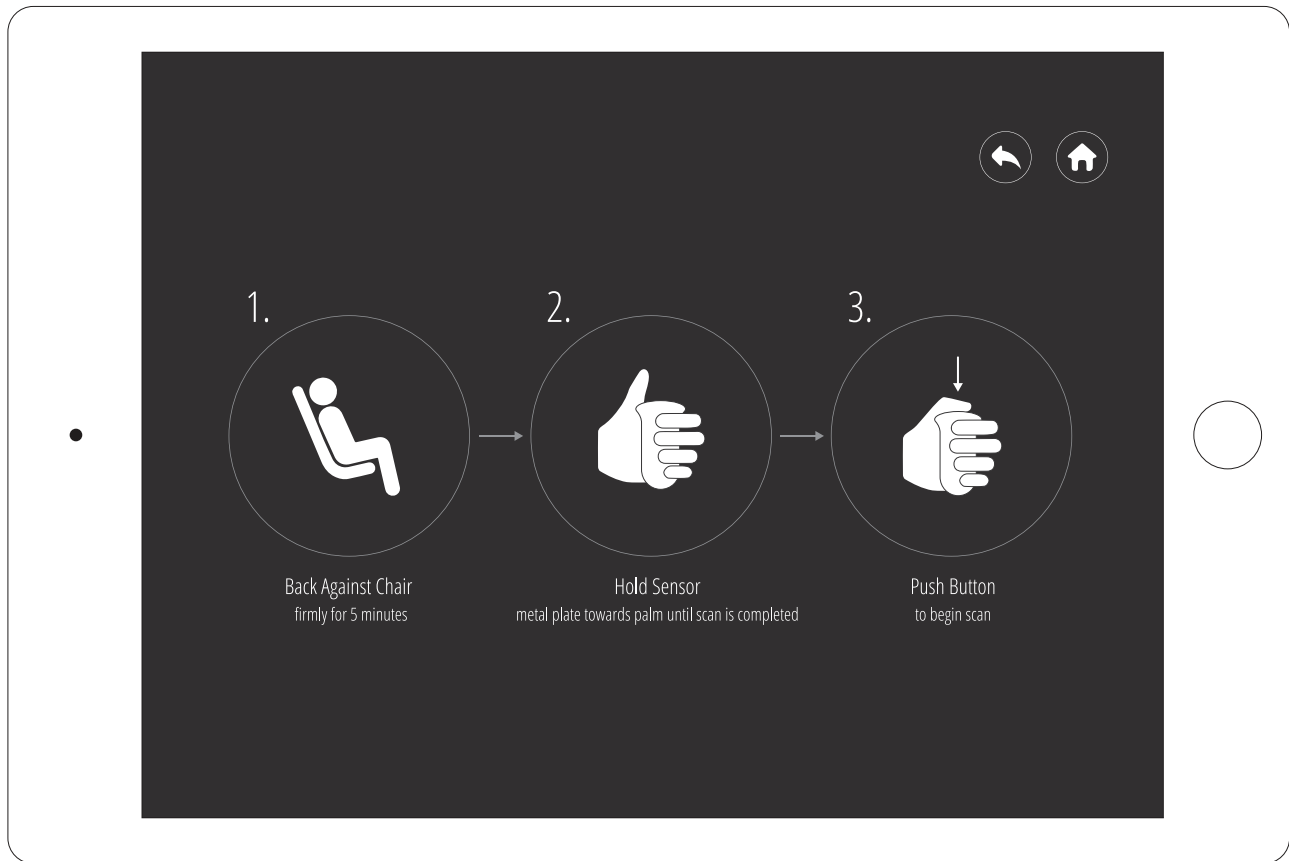


Select "Chair Doctor"



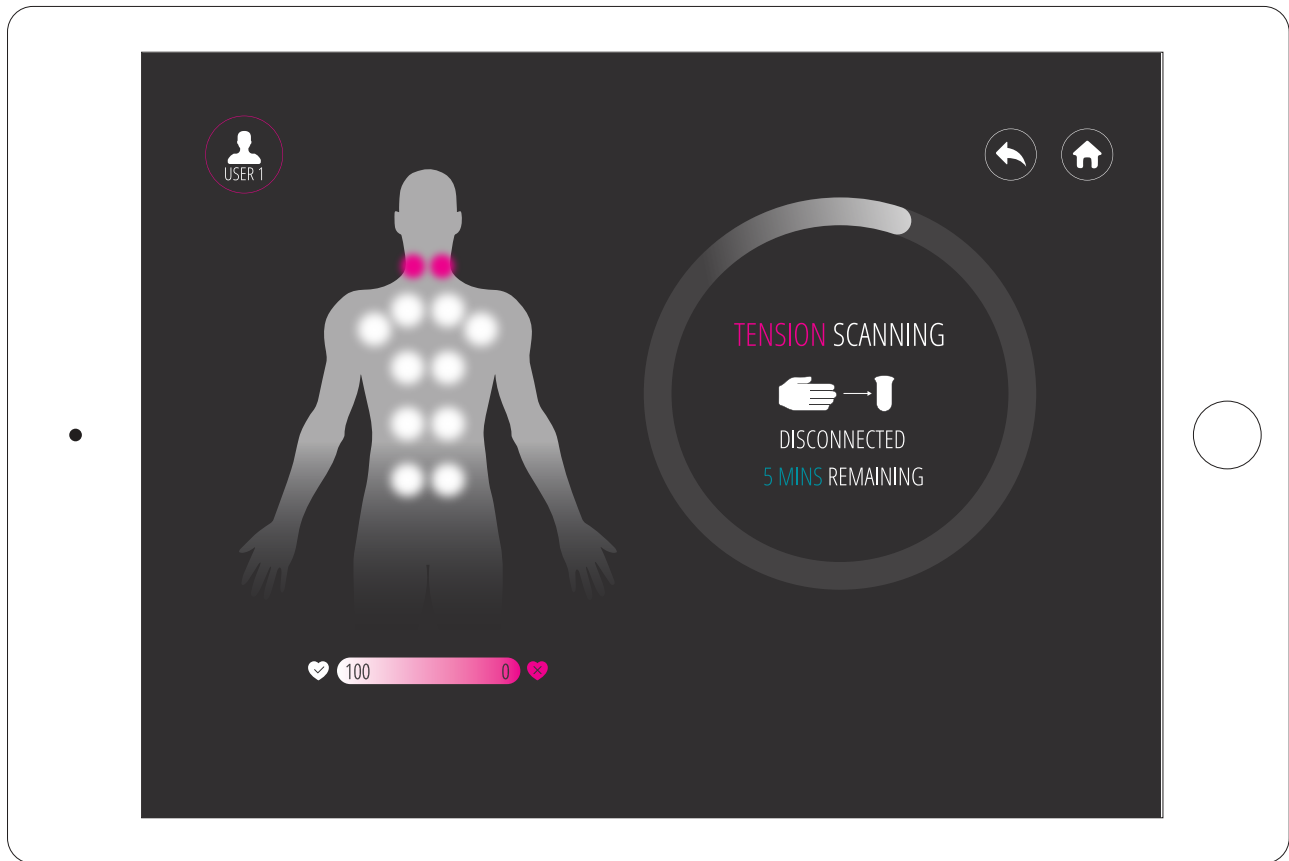
Select "New Diagnosis"

BEGIN YOUR MASSAGE

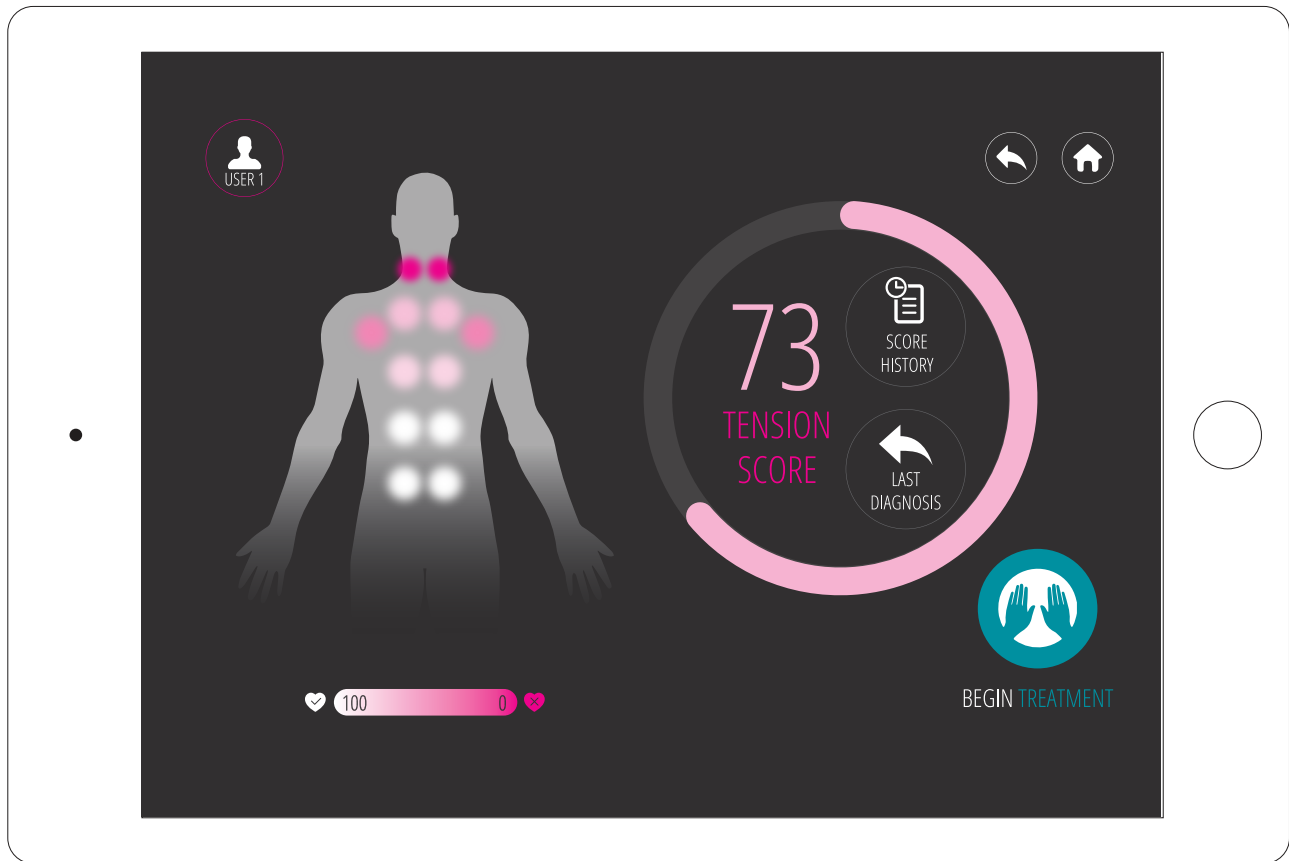


Press your back firmly against the chair
Hold the Body Pain Detector towards the back of your palm
Push button on Body Pain Detector to begin scan

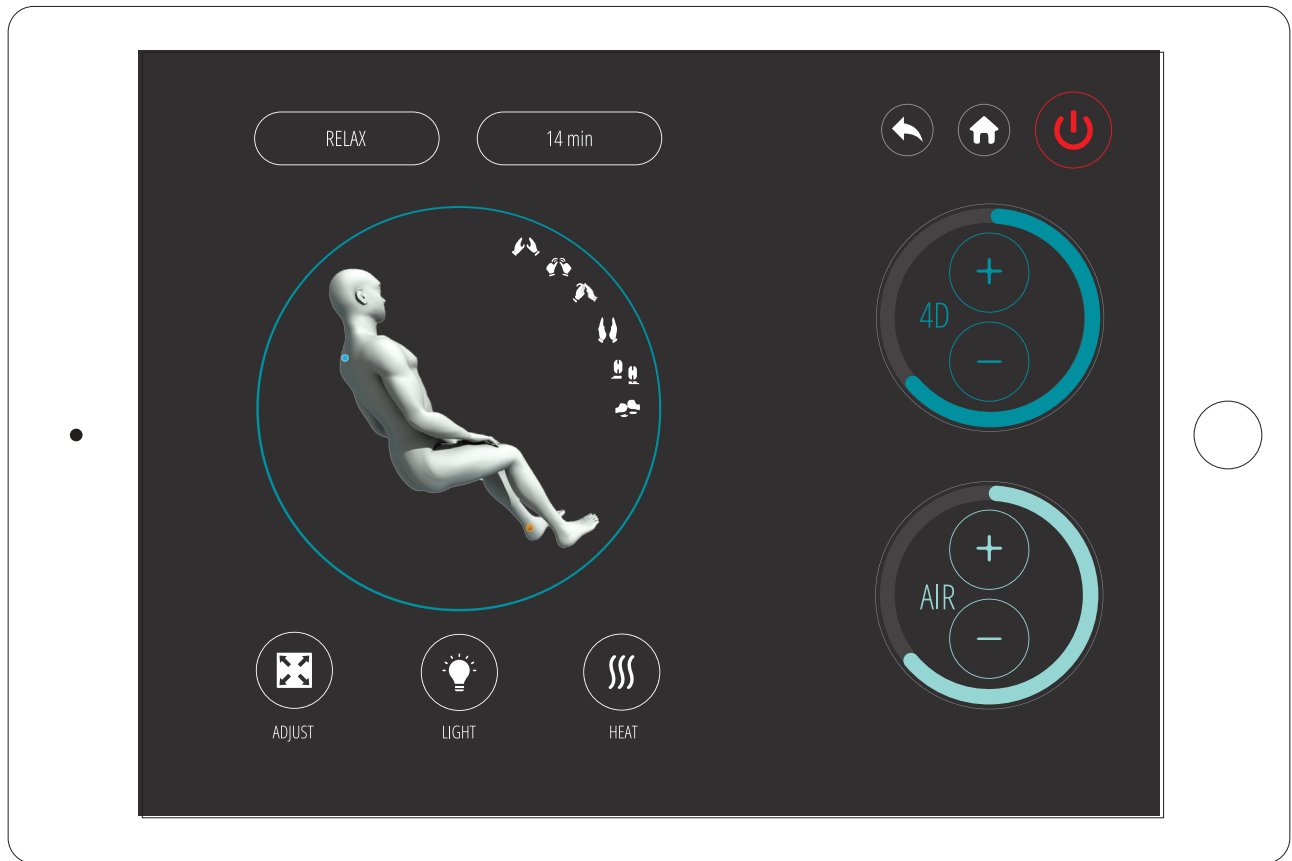
TENSION SCANNING



Chair doctor will scan for tension and sore muscles.
This may take up to 3 minutes.



After your scan, Chair Doctor will decide on a course of treatment that best suit your needs.



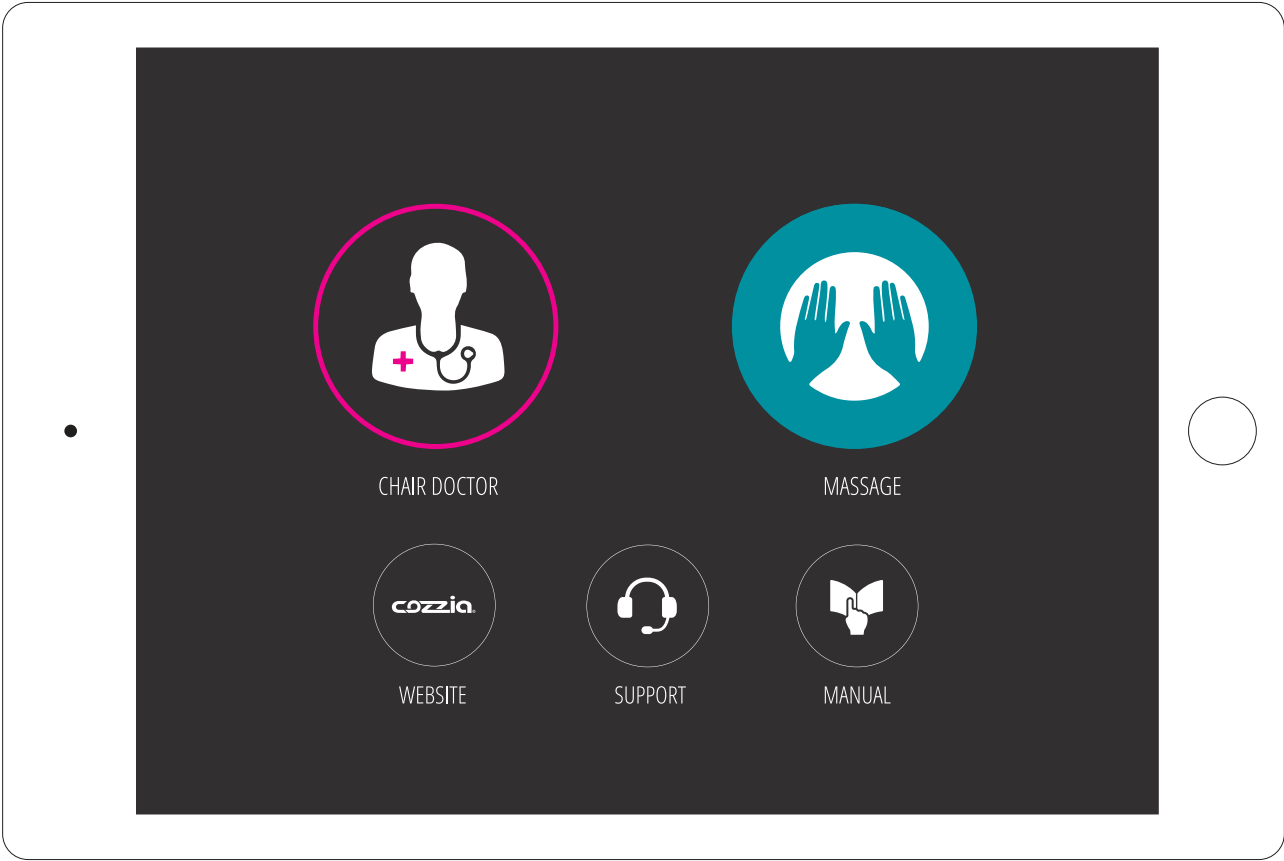
To begin treatment simply,
Select "Begin Treatment"

Massage chair will begin a customized massage based on your diagnosis

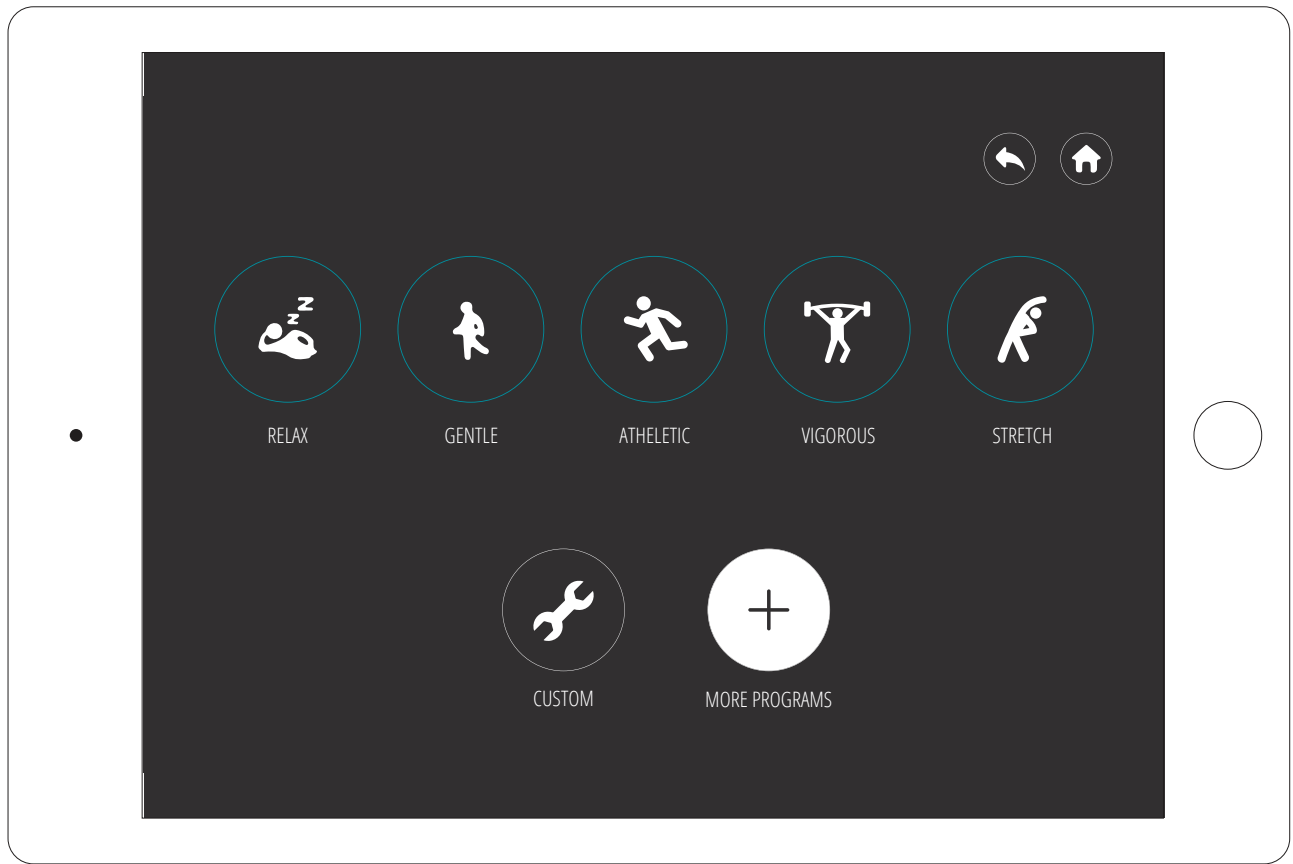
PRE-PROGRAMMED MESSAGE

We've designed your chair with multiple massage options for your changing needs.

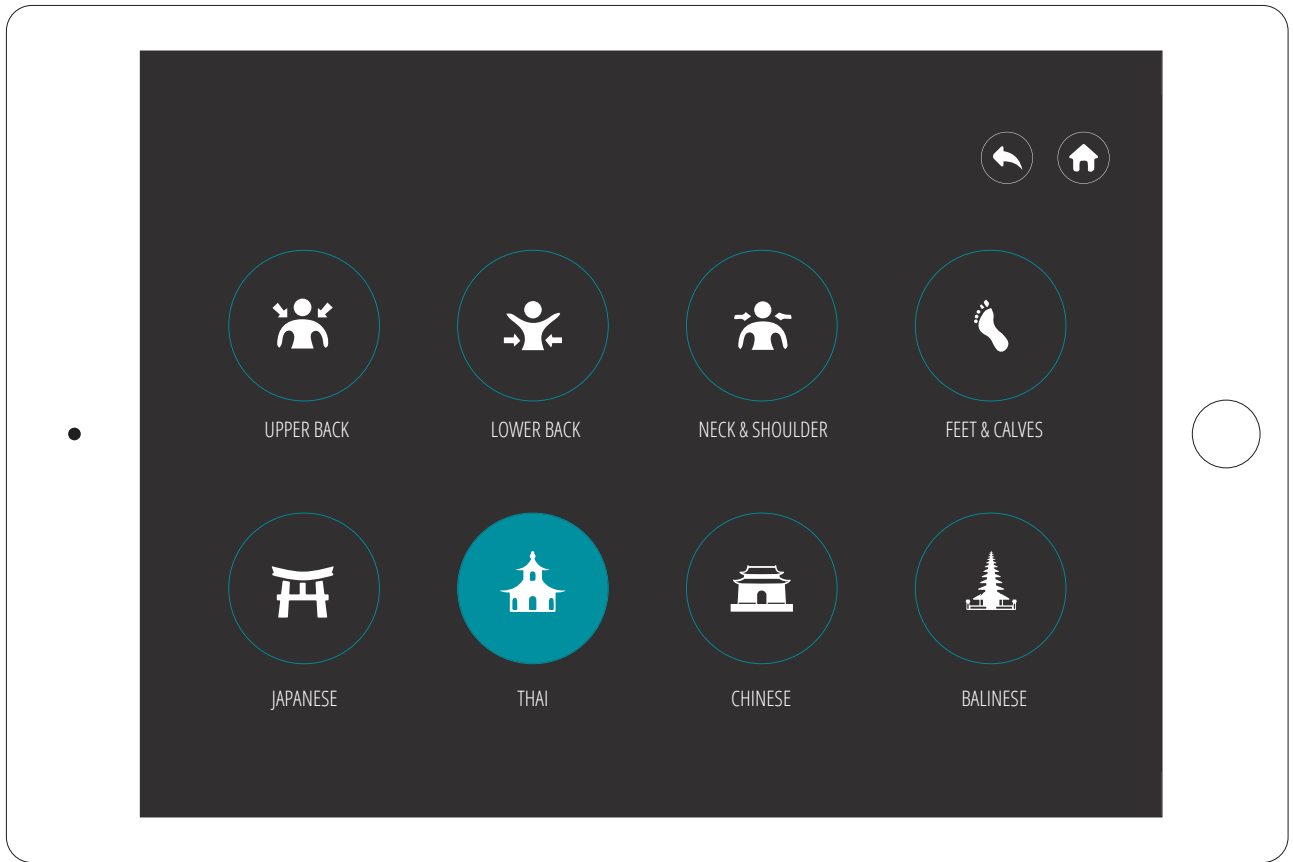
Follow these simple instructions to begin a new pre-programmed massage.



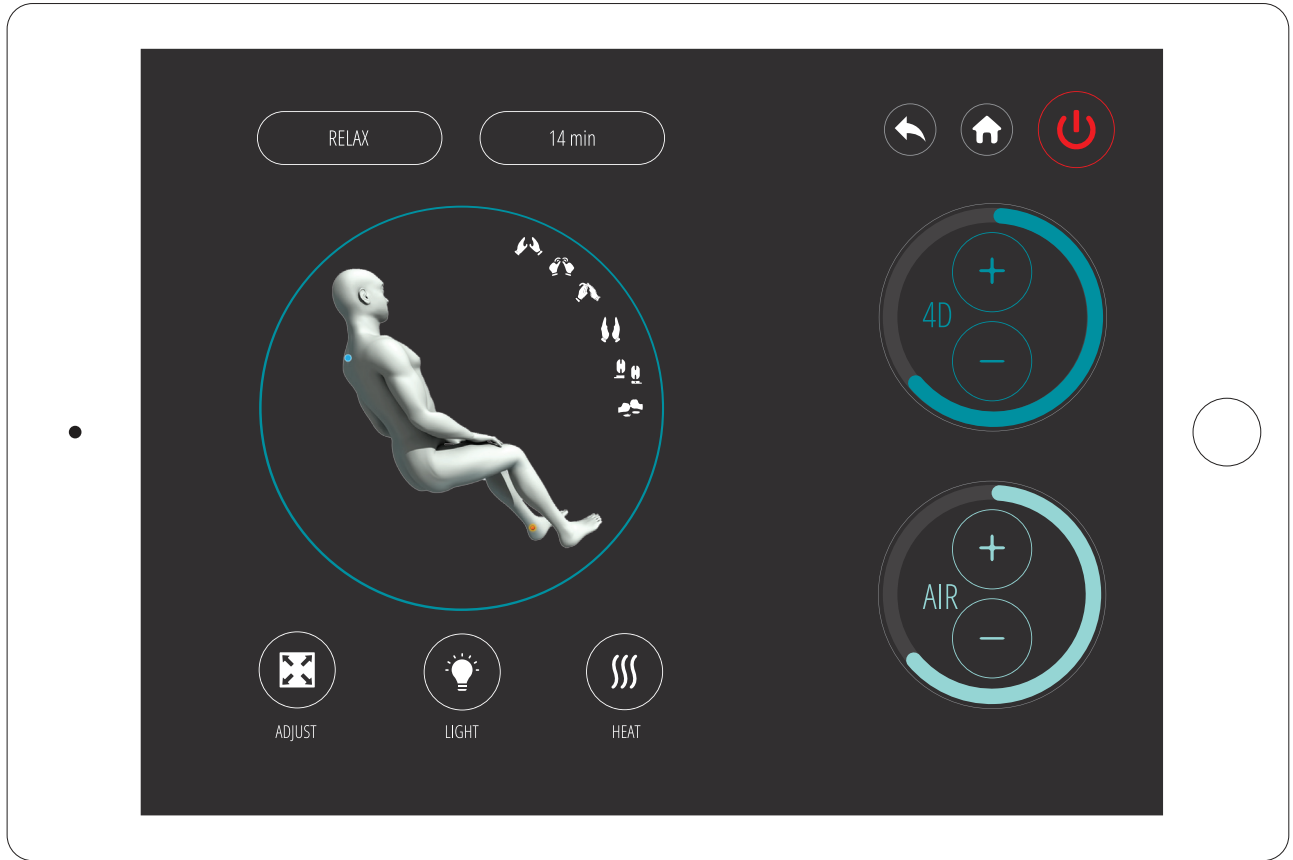
Select "Massage"



Select "More Programs"



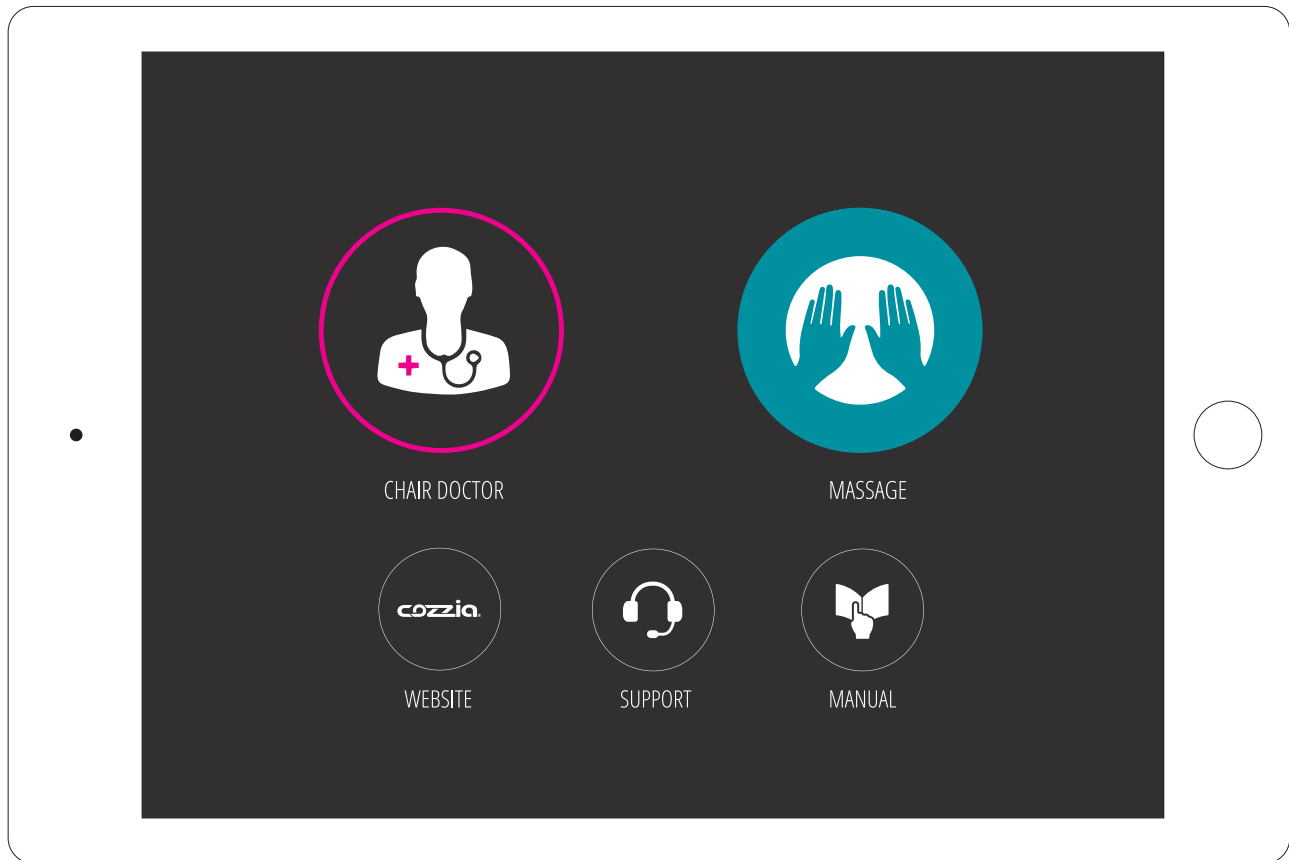
Select any massage



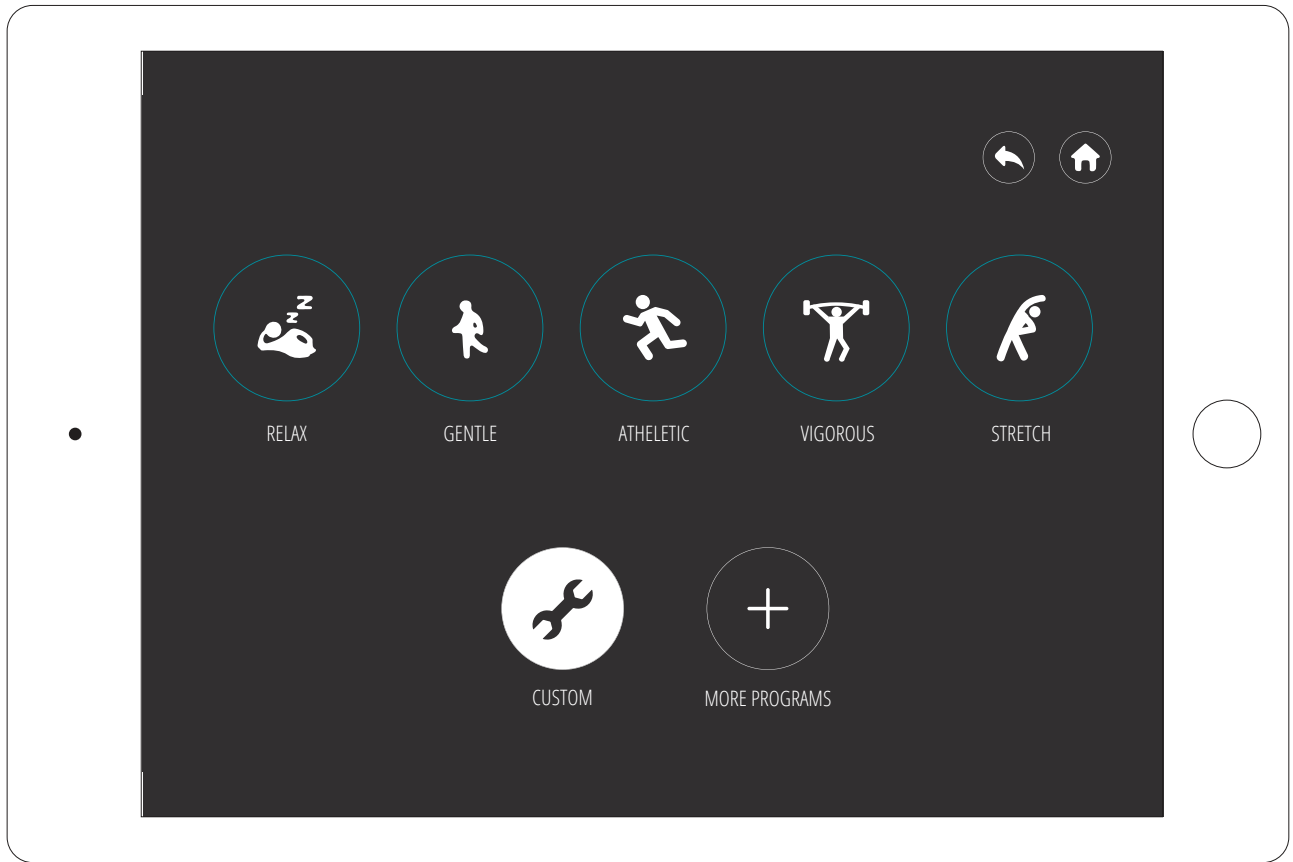
CUSTOM MESSAGE

Every body is different. That's why we've given you the option to customize your own message to meet your specific needs.

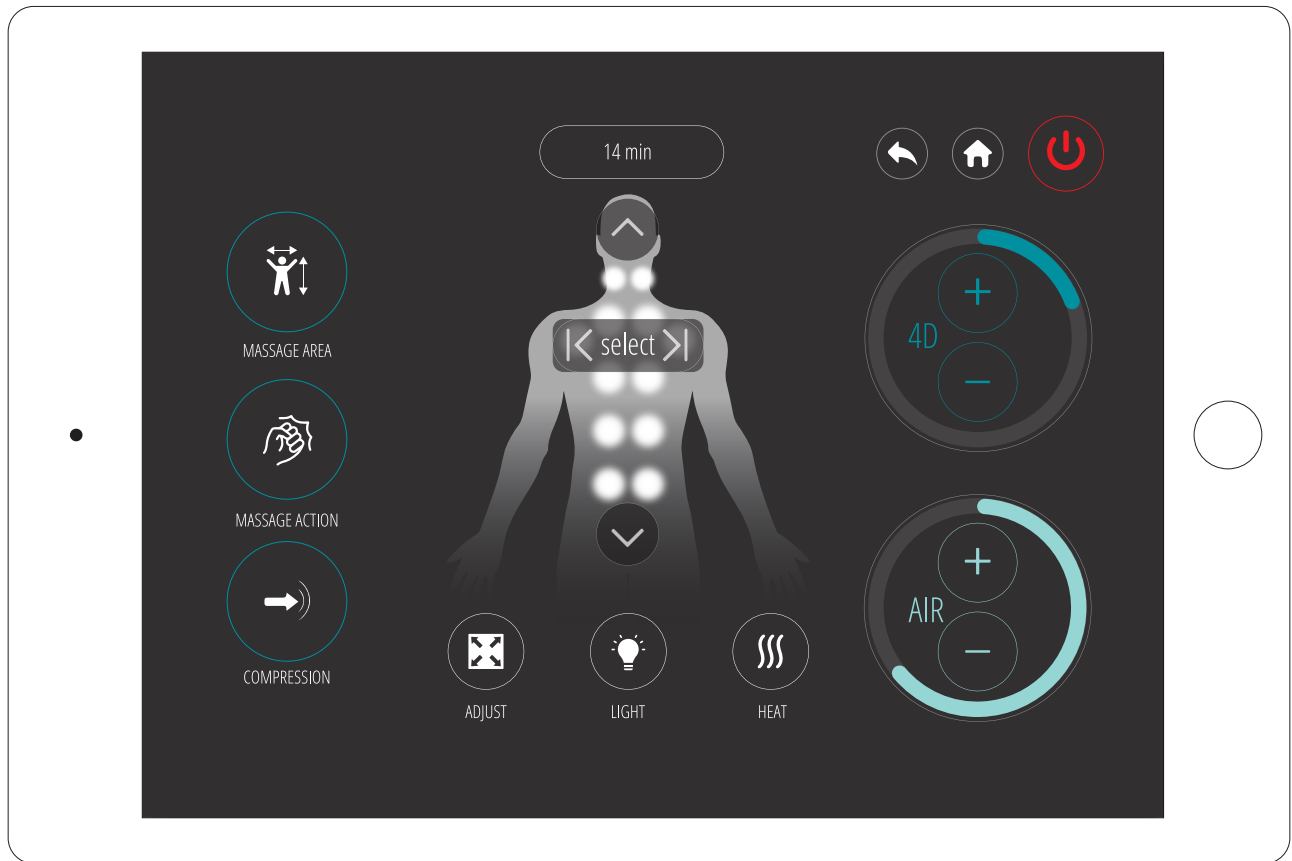
Follow these simple instructions to create a new custom message.



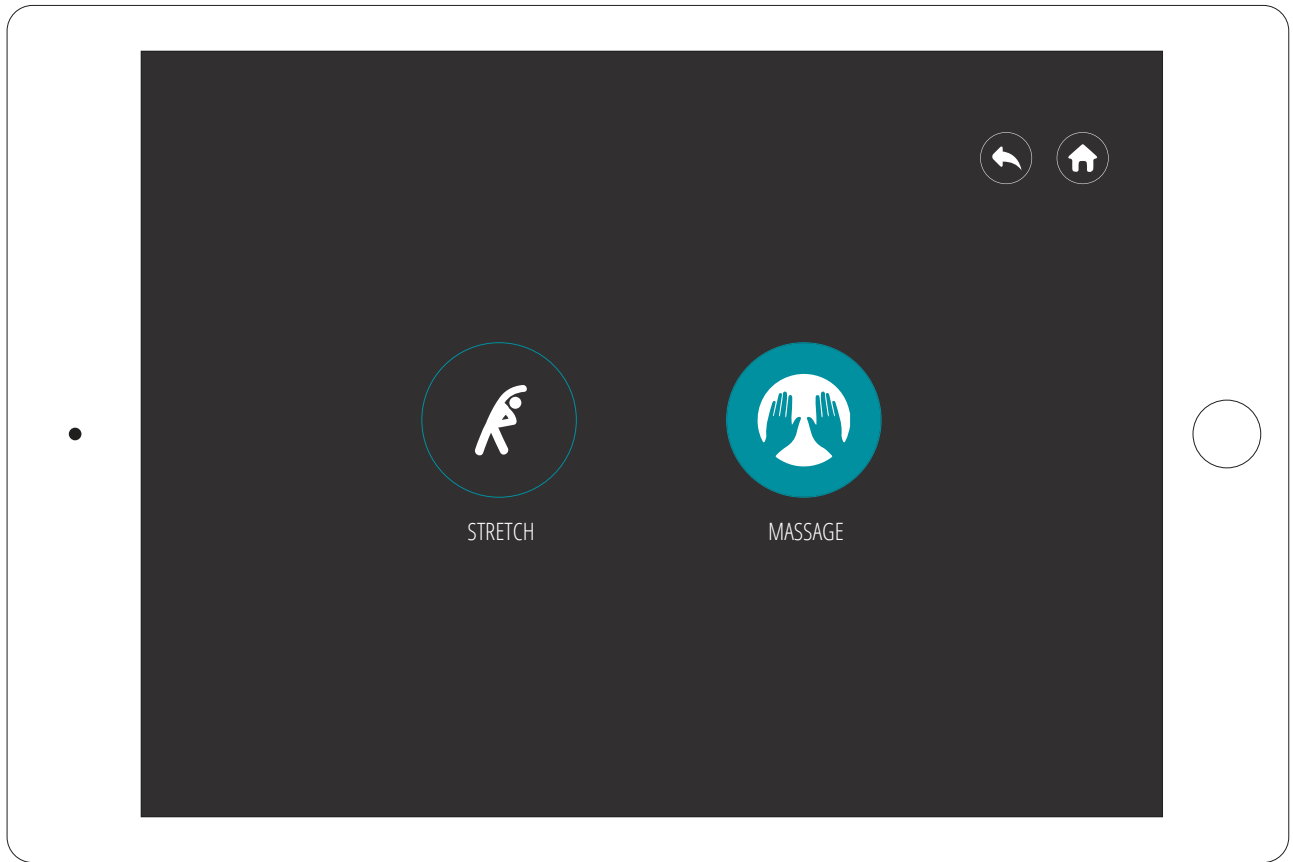
Select "Massage"



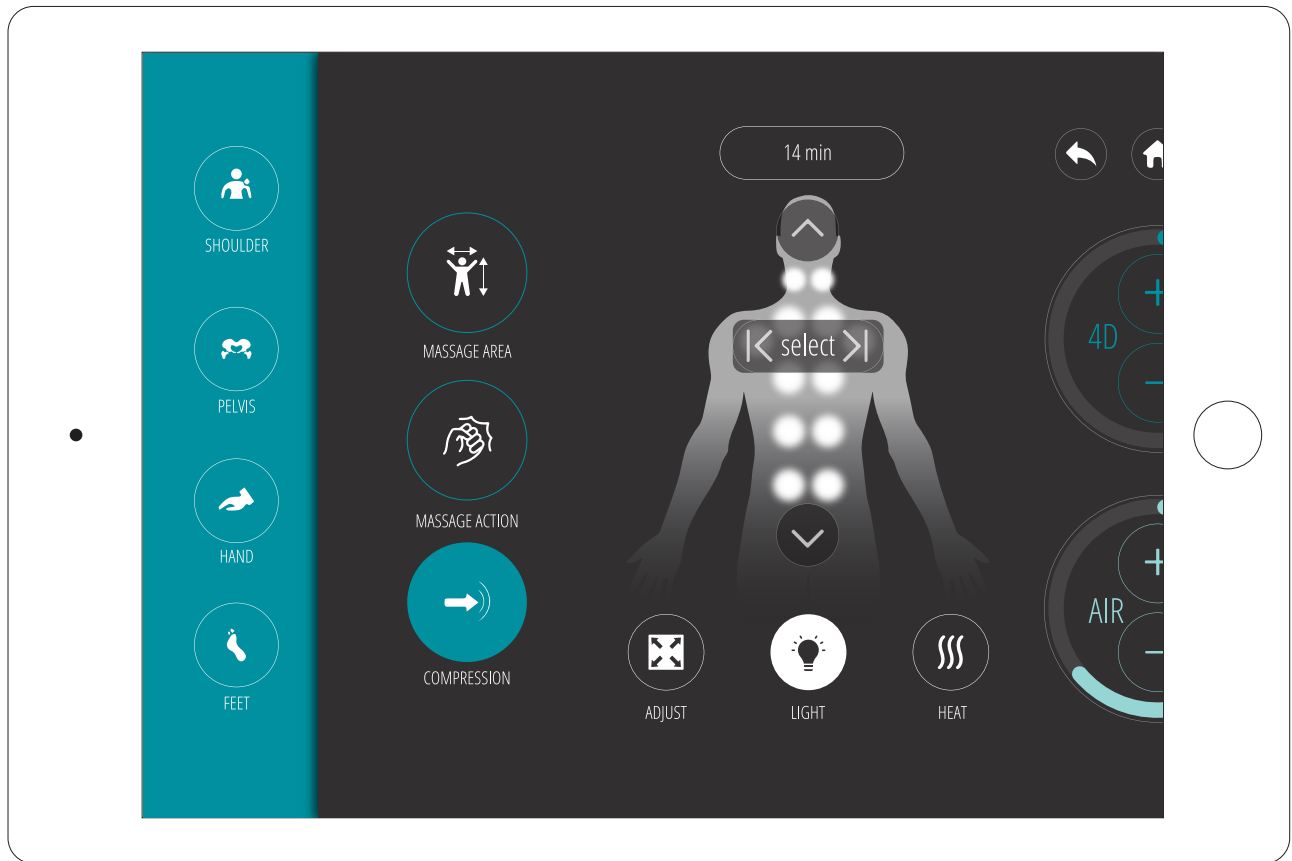
Select "Custom"



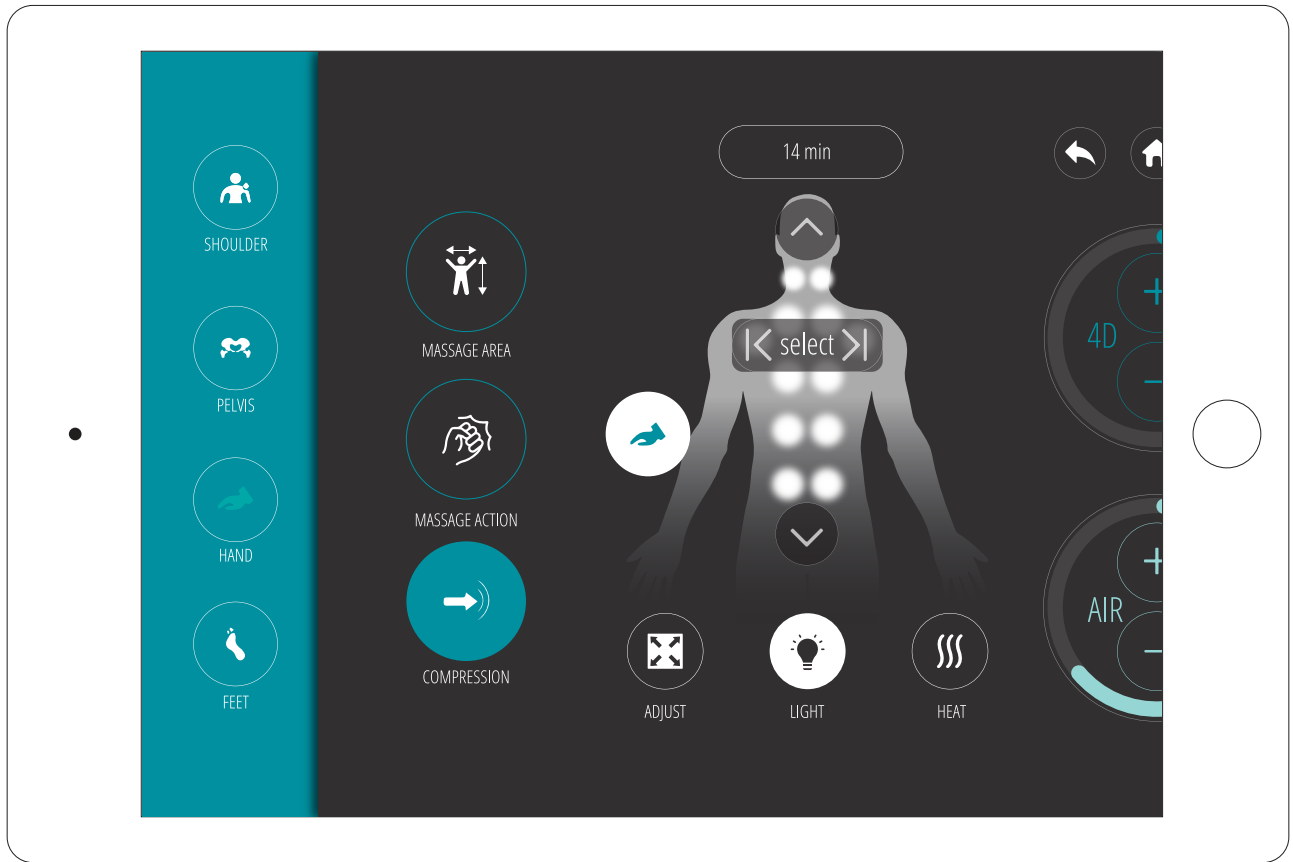
Select "Massage Area" or "Compression"



Select "Stretch" or "Message"



Select area of focus



Select area of focus

PRE-PROGRAM DESCRIPTION

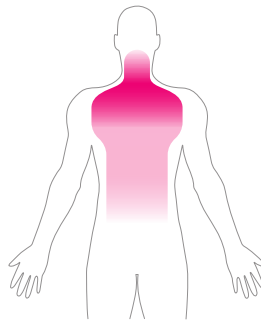
Let's dig a little deeper and discover the details of our pre-programmed massages.

RELAX



Let's dig a little deeper and discover the details of our pre-programmed massages.

FOCUS AREA



INTENSITY



FOCUS TECHNIQUE



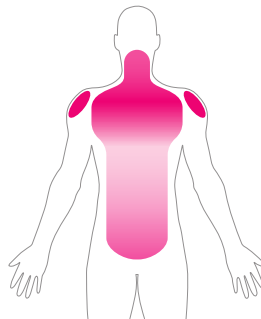
SHIATSU KNEAD

GENTLE



This massage will slowly move up and down your back with gentle tapping, finishing with a relaxing shoulder massage.

FOCUS AREA



INTENSITY



FOCUS TECHNIQUE



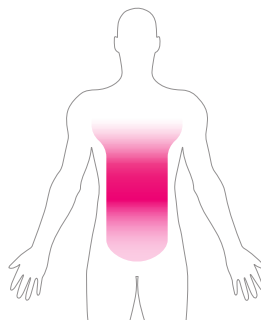
TAP KNEAD

ATHELETIC



This massage will focus on massaging and stretching your legs and mid-back with fast, rigorous movements.

FOCUS AREA



INTENSITY



FOCUS TECHNIQUE



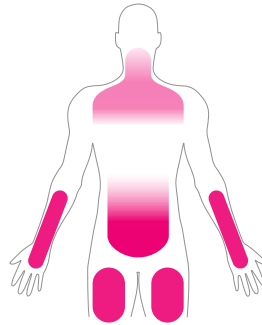
TAP ULTRA KNEAD

VIGOROUS



This massage will combine vigorous tapping on your lower back and an air massage focused on your thighs and legs.

FOCUS AREA



INTENSITY



FOCUS TECHNIQUE



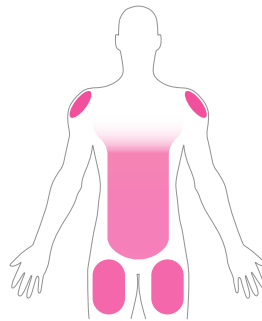
SHIATSU KNEAD

STRETCH



This massage will stretch your legs and back with a combination of gentle tapping, rolling, and air compression.

FOCUS AREA



INTENSITY



FOCUS TECHNIQUE



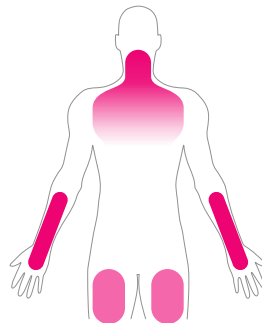
TAP KNEAD

UPPER BACK



This massage will focus on your neck, shoulders, and legs with a slow massage that incorporates soothing heat.

FOCUS AREA



INTENSITY



FOCUS TECHNIQUE



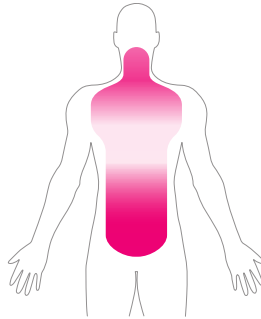
TAP ULTRA KNEAD

JAPANESE



This massage will focus on your mid back and upper shoulders with a deep tissue massage using the shiatsu technique that will create an acupressure effect.

FOCUS AREA



INTENSITY



FOCUS TECHNIQUE



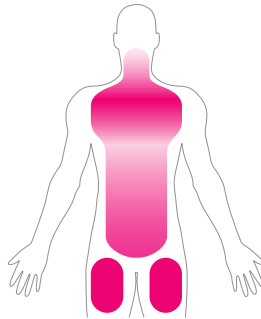
SHIATSU KNEAD

THAI



This massage will focus on your mid back and upper shoulders with a deep tissue massage using the shiatsu technique that will create an acupressure effect.

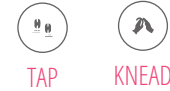
FOCUS AREA



INTENSITY



FOCUS TECHNIQUE



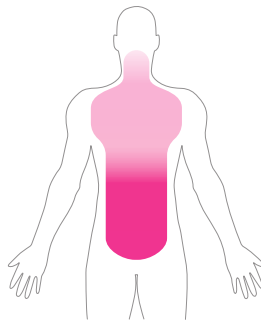
TAP KNEAD

CHINESE



This massage will focus on your entire back while also massaging your legs and feet.

FOCUS AREA



INTENSITY



FOCUS TECHNIQUE



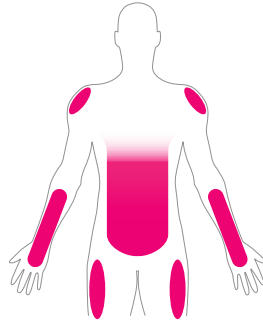
TAP ULTRA KNEAD

LOWER BACK



This massage will focus on your lower back with a deep massage that includes air compression.

FOCUS AREA



INTENSITY



FOCUS TECHNIQUE



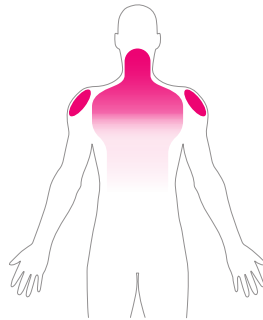
SHIATSU KNEAD

NECK & SHOULDER



This massage will focus on your shoulders and neck using a combination of kneading and shiatsu techniques.

FOCUS AREA



INTENSITY



FOCUS TECHNIQUE



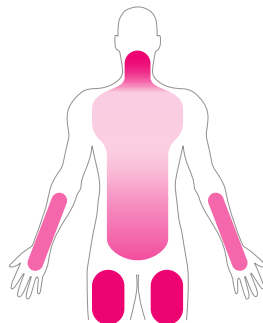
TAP KNEAD

FEET & CALVES



This massage will focus on your feet and legs using fast, intense pressure as well as soothing your back with kneading rollers.

FOCUS AREA



INTENSITY



FOCUS TECHNIQUE



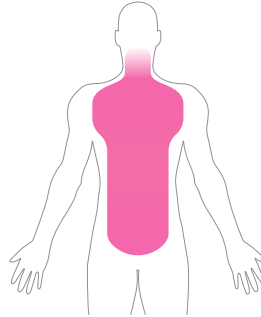
TAP ULTRA KNEAD

BALINESE



This massage will focus on your back and spine using fast, ultra kneading and tapping techniques.

FOCUS AREA



INTENSITY



FOCUS TECHNIQUE



SHIATSU



KNEAD

SAFETY PRECAUTIONS

We're looking out for you.

IMPORTANT SAFETY INSTRUCTIONS

When using the massage chair, basic precautions should always be followed, including the following:
Read all instructions before using this massage chair.

DANGER--To reduce the risk of electric shock:

- Always unplug this massage chair from the electrical outlet immediately after using and before cleaning.
- Never use pins or other metallic fasteners with this appliance.
- Carefully examine the covering before each use. Call for service if the covering shows any sign of deterioration, such as blistering, peeling or cracking.
- Keep dry--Do not operate in a wet or moist condition.

WARNING--To reduce the risks of burns, fire, electric shock or injury to persons:

- Read all instructions before using.
- A massage chair should never be left unattended when plugged in. Unplug from the outlet when it is not in use and before putting on or taking off parts.
- Close supervision is necessary when this massage chair is used by or near children or disabled persons. Keep children away from reclining backrest and extended leg rest.
- Use this massage chair only for its intent use as described in this manual.
- Never operate this massage chair if it has a damaged cord or plug, if it is not working properly, if it has been dropped or damaged, or dropped into water. Contact Customer Service Department.
- Keep the cord away from heated surfaces.
- Never operate the massage chair with the air openings blocked. Keep the air openings free of lint, hair and the like.
- Never drop or insert any object into any opening.
- Do not use outdoors.
- Do not operate where aerosol (spray) products are being used or where oxygen is being administered.
- To disconnect, turn all controls to the off position, then remove the plug from the outlet.
- Do not stand on or in the massage chair. Use only while seated.
- The product is not intended for use by children or persons with reduced physical, sensory or mental capabilities, or lack of experience and knowledge, unless they have been given supervision or instruction concerning use of the product by a person responsible for their safety.
- Children should be supervised to ensure that they do not play with the product.
- Temperatures sufficiently high to cause burns may occur regardless of the control setting. Do not use on an infant or invalid or on a sleeping or unconscious person. Check the skin in contact with the heated area of the appliance frequently to reduce the risk of blistering.
- Burns may result from improper use.
- Do not crush in order to avoid sharp folds.
- Keep children away from extended foot support (or other similar parts).
- DO NOT WET.
- DO NOT USE PINS.
- NEVER REMOVE COVER.
- Connect this appliance to a properly grounded outlet only. See Grounding Instructions.

SAVE THESE INSTRUCTIONS

This massage chair is intended for household use only.

1. Usage Environment

- Do not use the massage chair in an excessively humid or dusty environment as this may result in malfunction or electric shock.
- Do not use the massage chair in a room with a temperature of 104°F or higher.
- Do not expose the massage chair to heaters, stoves or direct sunlight.
- Place and use the massage chair on an even, non-slip floor.
- The massage chair is designed for home use and not for commercial purposes.



Caution

- This massage chair is to be used indoors only.
- If you use the massage chair in a cold room, do not increase the room temperature abruptly. It is recommended that you increase the temperature gradually to a normal level.
- If the massage chair is stored in a cold place and is being brought into a warm environment, it is advisable to wait for one hour before use. This is because its performance may not be at optimum level, as there may be water droplets on the mechanical parts due to condensation. Using the massage chair under such conditions may result in malfunction.

2. Safety Precautions

- To ensure safe and correct use of the massage chair, do not operate it without reading this operation manual carefully.
- Do not use the massage chair when the upholstery or seat is removed. This may cause injury or malfunction.
- Do not use the massage chair in combination with other therapeutic equipment or electric blanket etc., as this may result in ineffectiveness or injury.
- Do not use the massage chair an hour before or after eating as this may have adverse effects on the user.
- Do not allow children or pets to play around the massage chair, e.g. behind the backrest, under the seat base or legrest of the massage chair. This may result in injury.
- Do not use the massage chair when your body is wet.
- Do not operate the massage chair with wet hands.
- It is not recommended to use the massage chair for more than 15 minutes.
- Do not perform continuous massage on the same part of your body for more than 5 minutes at a time as this may result in excessive stimulation and may have adverse effects.
- Do not insert your hand or foot along the paths of the massage rollers during use as this may cause injury.
- Stop operation immediately if you feel any discomfort.
- This product is not intended for self-treatment of conditions that should be managed by a qualified health care provider.
- People on medication or with medical conditions, please consult your doctor before use. Please do not use the product if you are not feeling well.

3. People with Medical Conditions

Consult your doctor before use if you:

- are under medical rest as ordered by a doctor.
- have spinal disorders, an abnormal spinal condition or have suffered a spinal injury.
- have back problems.
- have diabetes, osteoporosis or sensory impairment.
- have joint dysfunction such as rheumatism, hammertoe or gout.
- have a pacemaker or other electronic medical devices.
- may be pregnant.
- have phlebitis or thrombosis.
- have an increased risk for blood clots.
- had recent surgery.
- Have surgical pins, screws, or anything mechanical in the legs, ankles or feet.



Caution

- This massage chair is not intended for use by children or persons with reduced physical, sensory or mental capabilities, or lack of experience and knowledge, unless they have been given supervision or instruction or instruction concerning use of the massage chair by a person responsible for their safety.
- Children should be supervised to ensure that they do not play with the massage chair.
- Avoid using the massage chair under the influence of alcohol.
- Do not apply massage rollers directly on the head, elbow or knee joints, torso or abdomen.
- If your legs or feet slip off the leg rest during massage, do not force them back in as this may result in injury.
- Remove the power plug from the electrical outlet immediately should liquid be accidentally spilled onto the massage chair. Do not use wet hands to connect or disconnect the power plug from the electrical outlet.
- Do not tamper with the power cord or use the massage with a damaged cord as this may result in malfunction and electric shock.

4. Instances When the Massage Chair Should Not Be Used

In the following events, please switch off the main power switch immediately and disconnect the power cord from the electrical outlet:

- If liquid is accidentally spilled onto the massage chair. This may result in electric shock or malfunction.
- If the fabric of the backrest is torn and the internal components are exposed.
- If pain or discomfort is felt during massage, stop operation immediately and consult your doctor.
- If you detect any malfunction or any other abnormal condition during operation.
- If there is power failure. Injury may occur when power is restored unexpectedly.
- If there is lightning.

5. Assembly and Repair of the Massage Chair

- Do not disassemble the backrest cover of the massage chair. Touching the internal components may result in malfunction or electrical shock.
- This massage chair must only be professionally serviced or repaired. Do not attempt to disassemble or repair the massage chair by yourself.

6. Things to Be Noted About the Power Plug and Cord

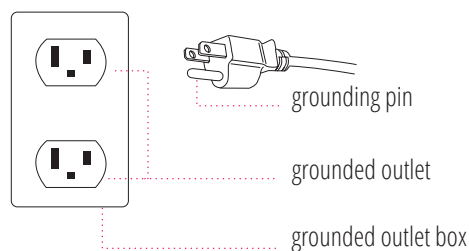
- Check that the Alternating Current (AC) voltage corresponds with the specifications indicated for the massage chair.
- Do not connect or disconnect the power plug from the electrical outlet with wet hands. This may result in malfunction or electric shock.
- When disconnecting the power plug, pull it by holding the plug, not the cord.
- Although operation will be stopped automatically by the Auto-Timer function, always remember to switch off the main power after use.
- Do not place the power cord under the massage chair or any other heavy objects.
- Do not wind the power cord around the massage chair as this may damage the cord and result in a fire or electric shock.
- Do not operate the massage with a damaged cord or extension cord.
- Do not use the massage if the electrical outlet is loose.
- If the power cord is damaged, it should be replaced by a qualified technician.

GROUNDING INSTRUCTIONS

This product must be grounded. If it should malfunction or break down, grounding provides a path of least resistance for the electric current to reduce the risk of electric shock. This product is equipped with a cord with an equipment-grounding conductor and a grounding plug. The plug must be plugged into an appropriate outlet that is properly installed and grounded in accordance with all local codes and ordinances.

Danger-Improper connection of the equipment-grounding conductor can result in a risk of electric shock. Check with a qualified electrician or service technician if you provided with the product-if it will not fit the outlet, have a proper outlet installed by a qualified electrician.

This product is for use on a nominal 120V circuit and has grounding plug that looks like that plug illustrated below. Make sure that the product is connected to an outlet having the same configuration as the plug. No adapter should be used with this product.



TROUBLESHOOTING

This massage chair is controlled by a microcomputer and is thus susceptible to power surges of +10 to 15%. The following situations may arise in the event of a power surge:

Situation	Solution
The massage chair is connected to the power supply but is not functioning	1. Check to see that the plug is properly connected and working 2. Ensure the massage chair switch is in the 'I' position
The remote control works but the massage chair is not functioning.	Possible overheating due to prolonged use. Turn off the power for at least 30 to 50 minutes
Both the remote control and the massage chair are not functioning	1. Ensure the chair is plugged into a working outlet 2. Turn the power OFF and ON again

PRODUCT CARE AND STORAGE

1. Storing the Massage Chair

- Wipe off dust and dirt from the massage chair with a dry, soft, clean cloth after use.
- Keep the massage chair clean and away from places of high humidity.
- If the massage is not to be used for a long period of time, cover the massage chair with a dust cover and unplug its power plug from the electrical outlet.

Caution

- Do not store the massage chair in direct sunlight or in places of high temperature. This may cause the color of the upholstery to fade.
- Do not allow the massage chair to remain in contact with vinyl or wallpaper for extended periods of time as this could lead to discoloration.

2. Cleaning the Massage Chair

- Before cleaning, ensure that the main power switch is off and the power plug is disconnected from the electrical outlet.
- Wipe off dust and dirt from the massage with a dry, soft, clean cloth after each use.
- This product can be cleaned thoroughly with a slightly damp cloth.
- Do not iron the upholstery.
- Do not wash the upholstery using a home washing machine as this may result in deterioration of the upholstery's quality.

Caution

- Do not use abrasive cleaning agents like benzene or thinner to clean the massage chair. This may cause the upholstery to fade.

3. Cleaning the Controller

- Use only a clean, dry cloth to clean the controller.

Caution

- Do not use a wet cloth to clean the controller. This may result in malfunction.

COZZIA CONSUMER WARRANTY

COZZIA products have the following warranty:

COZZIA's massage chairs, motion upholstery and home theater massage seating provide a three years in-home service warranty and a three-year parts warranty. COZZIA customer service will not issue Return Material Authorizations (RMAs) for products. COZZIA products will be either repaired by the consumer or by an in-home technician. COZZIA will not issue Return Material Authorizations (RMAs) for buyer's remorse.

Service And Technical Support

Consumers may contact COZZIA's customer service department at 1-877-977-0656 between 9:00 am and 5:00 pm PST, Monday through Friday or email us at Service@cozziausa.com or visit our web at www.cozziausa.com for warranty or service issues.

Consumers are required to provide the unit serial number and dated proof of purchase (sales receipt) when they contact the COZZIA service department regarding a repair.

A COZZIA customer service representative will attend to most consumer inquiries, but in some cases a technical service specialist will provide advanced support.

Non-warranty repair is provided on a "per incident" basis. COZZIA customer service will verify that the unit has failed and provide instructions for repairing a unit. All applicable repairs, parts, shipping, handling, local tax and a "per incident" fee will be charged for non-warranty repairs and support calls.

Proof of purchase (original receipt) is required for all warranty repairs or service.

Extended Warranties:

Cozzia offers extended warranty programs to enhance ownership of Cozzia product. Extended warranty provides: 3-year limited repair or replacement massage chair warranty with on-site service. Please visit www.cozziausa.com for the latest terms and pricing for extended warranties.

Product Repairs

Many COZZIA product repairs may be performed by the consumer in their own home with parts and instructions supplied by COZZIA such as remote controller replacements that don't require a technician. Canadian consumers may contact COZZIA's customer service department at 1-877-977-0656 between 9:00 am and 5:00 pm PST, Monday through Friday for warranty or service issues.

- Floor Models and Demonstration Units have a prorated warranty period that begins the day the model is placed on the floor and connected to an electrical outlet by the retail partner. Proof of purchase is required in order to obtain warranty service and parts. Non-warranty parts and service are available at a "per incident" charge.
- Warranty Coverage Period - Warranty coverage starts at the time that the consumer PURCHASES their chair. Proof of purchase is required for all warranty repairs. The warranty time period is measured by continuous calendar days based on a seven-day week.
- Field Service – COZZIA customer service department will diagnose and schedule an authorized service provider to repair the chair in the consumer's residence.
- Parts - All parts deemed necessary for repairs will be shipped to the consumer at no charge by the COZZIA service department.

CONSUMER WARRANTY LIMITATIONS AND EXCLUSIONS

- Warranties are only valid in the 48 contiguous United States and Canada and are contingent upon the consumer operating the chair according to the corresponding instruction manual.
- The warranty only applies to COZZIA products and does not include any accessories or enhancements.
- Field service requires pre-approval and must be performed by COZZIA's authorized field service personnel. Field service is only available in the United States and in major metropolitan areas in Canada.
- Softening of foams and filling composites in pillows, pads, and memory foam occurs naturally and does not constitute a defect under this warranty.
- Fading, wear and piling of fabrics occurs naturally and does not constitute a defect under this warranty.
- Natural markings, grain and dye variations in leather do not constitute a defect under this warranty.
- Warranties do not cover any loss or damage resulting from improper installation, unauthorized repairs or modifications, improper use of electrical/power supply, loss of power, dropped product, a malfunction or damage of an operating part from failure to provide manufacturer's recommended maintenance, transportation damage, theft, abuse, misuse, neglect, vandalism or environmental conditions (fire, floods, rust, corrosion, sand, dirt, windstorm, hail, earthquake or exposure to weather conditions), loss of use during the period the product is at a repair facility, or otherwise awaiting parts or repair.
- Damage due to shipping and handling does not constitute a defect under this warranty.
- Under no circumstance shall COZZIA or its representatives be liable for indirect, consequential, or incidental damages (including damages for lost profits, business interruption, bodily injury, medical and the like), even if any party has been advised of the possibility of such damages.
- Warranties are non-transferable and shall be in lieu of any other warranty, express or implied, including but not limited to any implied warranty or merchantability or fitness for particular use.
- COZZIA's sole liability and the purchaser's exclusive remedy shall be for the repair, or at COZZIA's option, for the replacement of the defective part. Notwithstanding the above, if replacements parts for defective materials are not available, COZZIA reserves the right to make substitutions in lieu of repair or replacement.



14515 E DON JULIAN ROAD,
CITY OF INDUSTRY, CA 91746

TEL: 1-877-977-0656
FAX: 1-800-521-4712
SERVICE@COZZIAUSA.COM

WWW.COZZIAUSA.COM